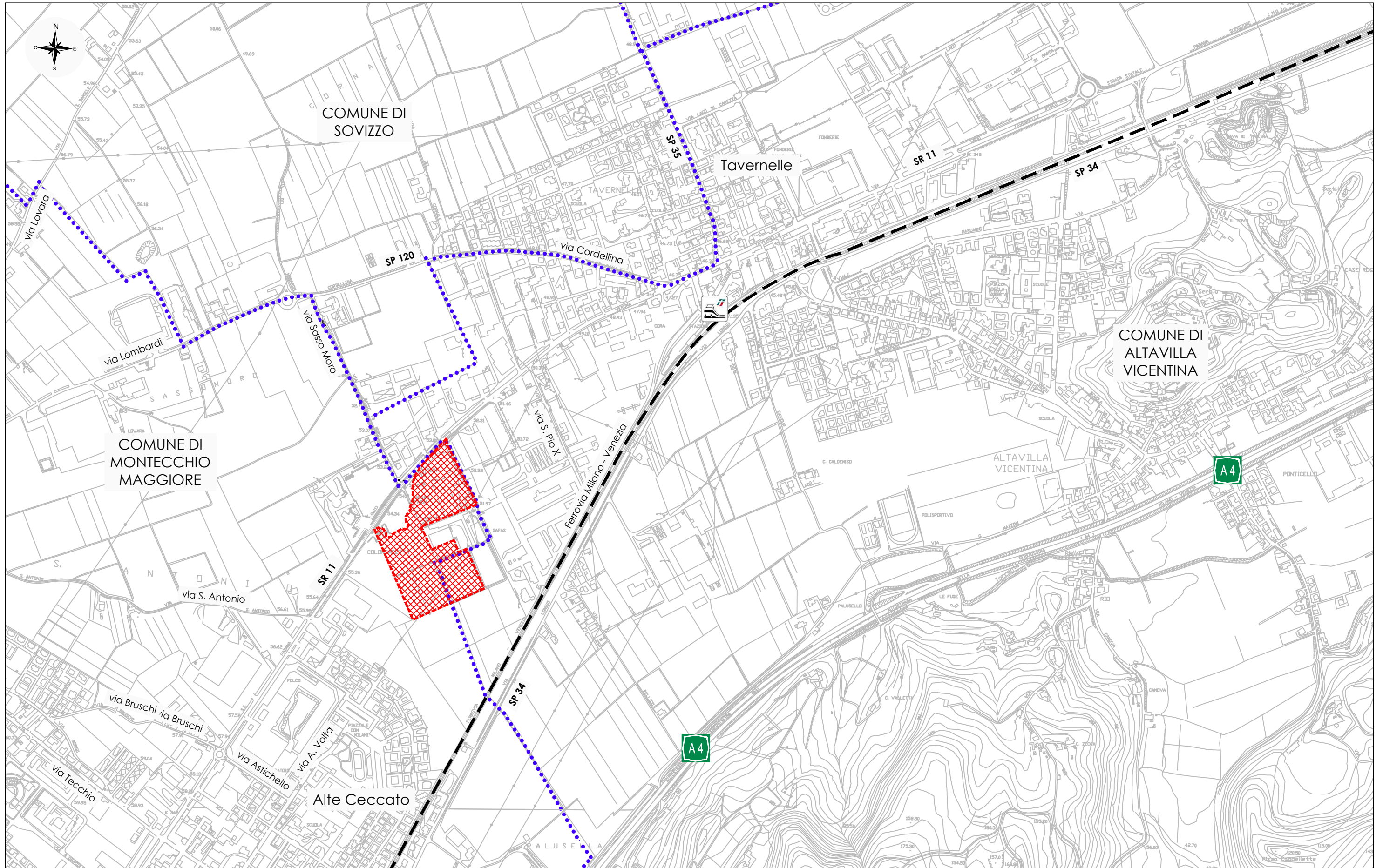
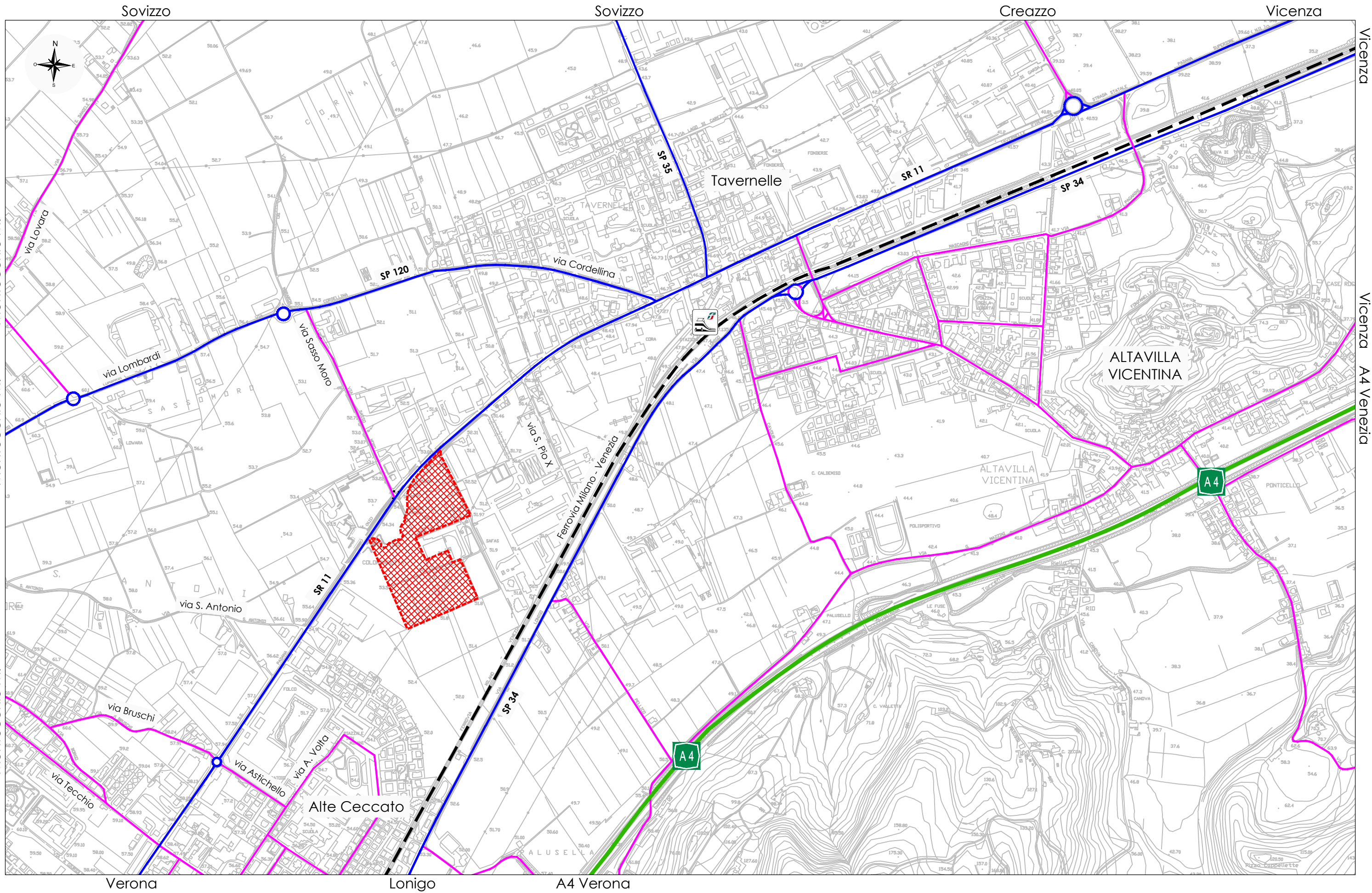
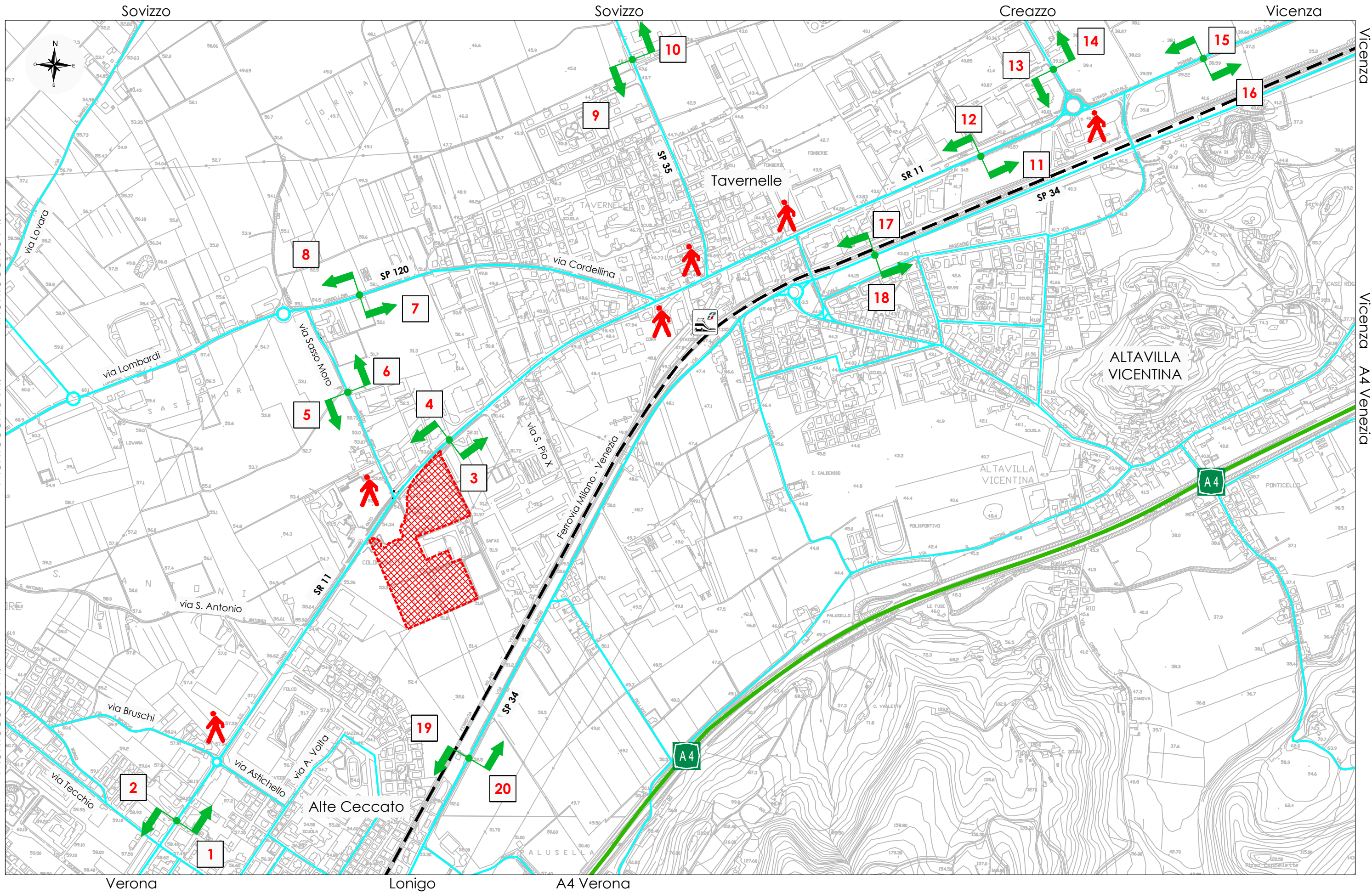


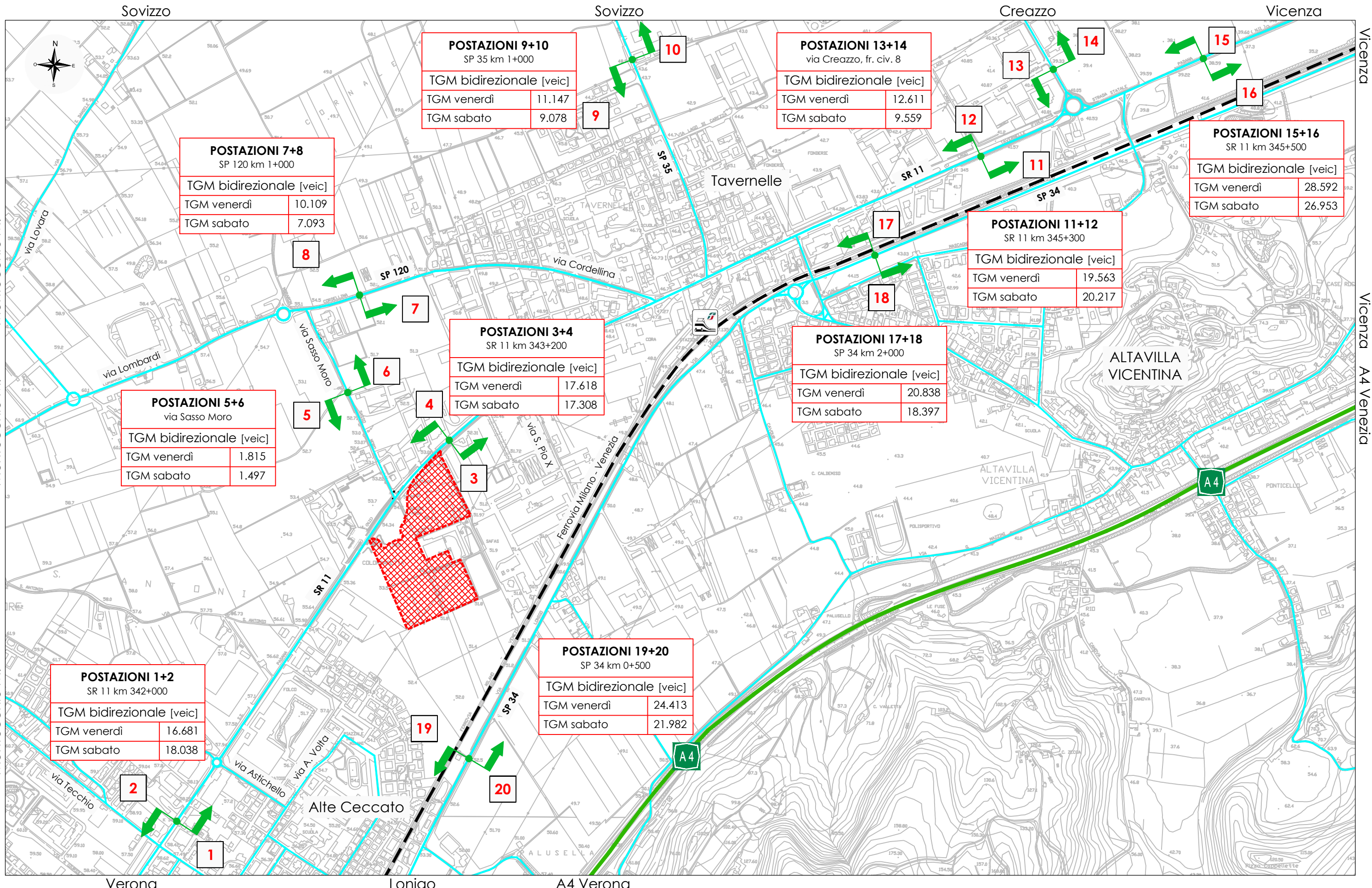
A. ELABORATI GRAFICI

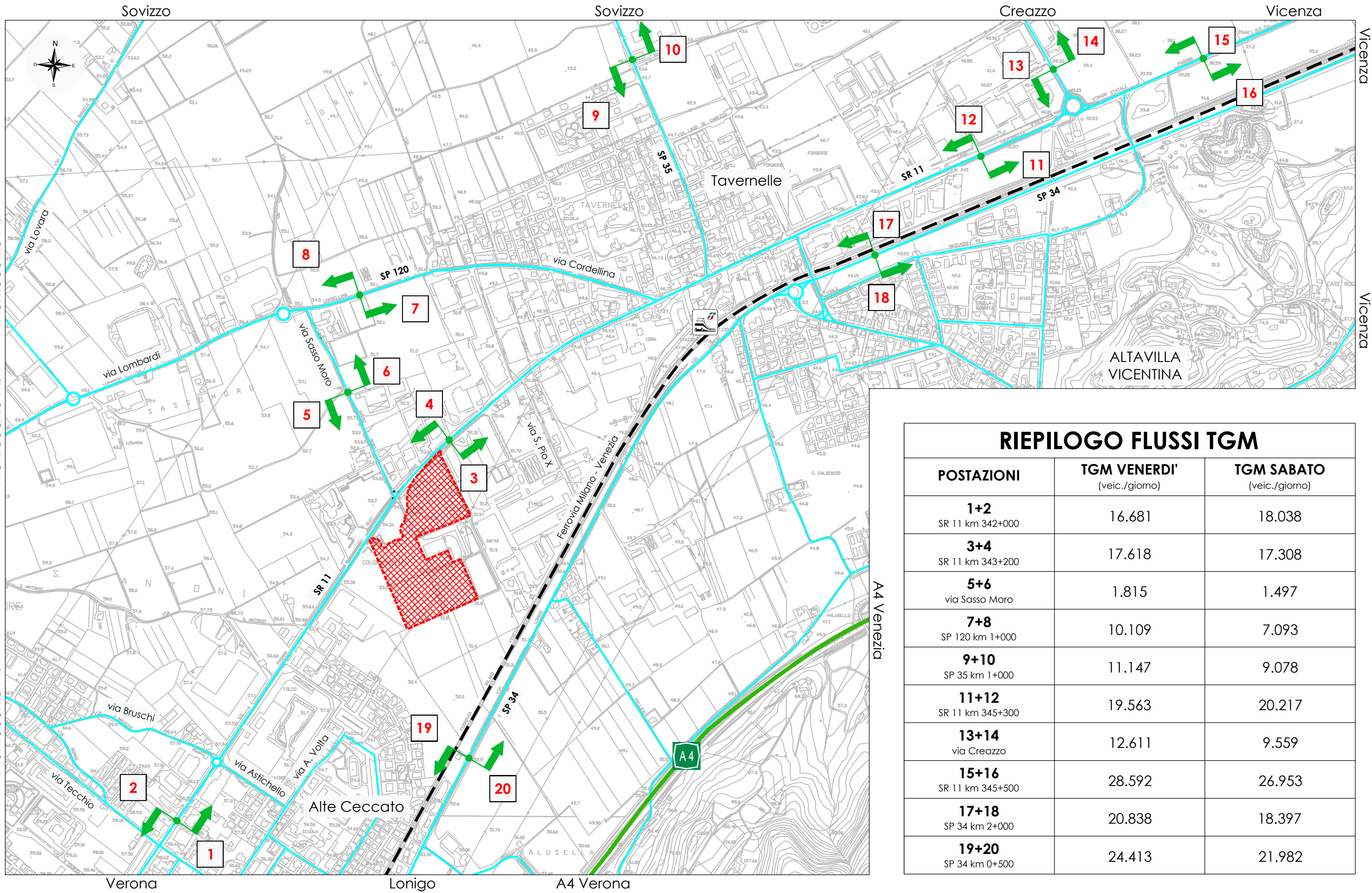
1. Inquadramento territoriale
2. Schema funzionale
3. Postazioni di rilievo automatiche
4. TGM venerdì e sabato
5. Riepilogo flussi TGM venerdì e sabato
6. Flussi attuali venerdì 17.00 – 18.00
7. Flussi attuali venerdì 18.00 – 19.00
8. Flussi attuali sabato 17.00 – 18.00
9. Flussi attuali sabato 18.00 – 19.00
10. Flussi bidirezionali venerdì e sabato
11. Flussi attuali intersezione SR 11 / via Sasso Moro venerdì 17.00 – 18.00
12. Flussi futuri rotatoria SR 11 / via Sasso Moro venerdì 17.00 – 18.00





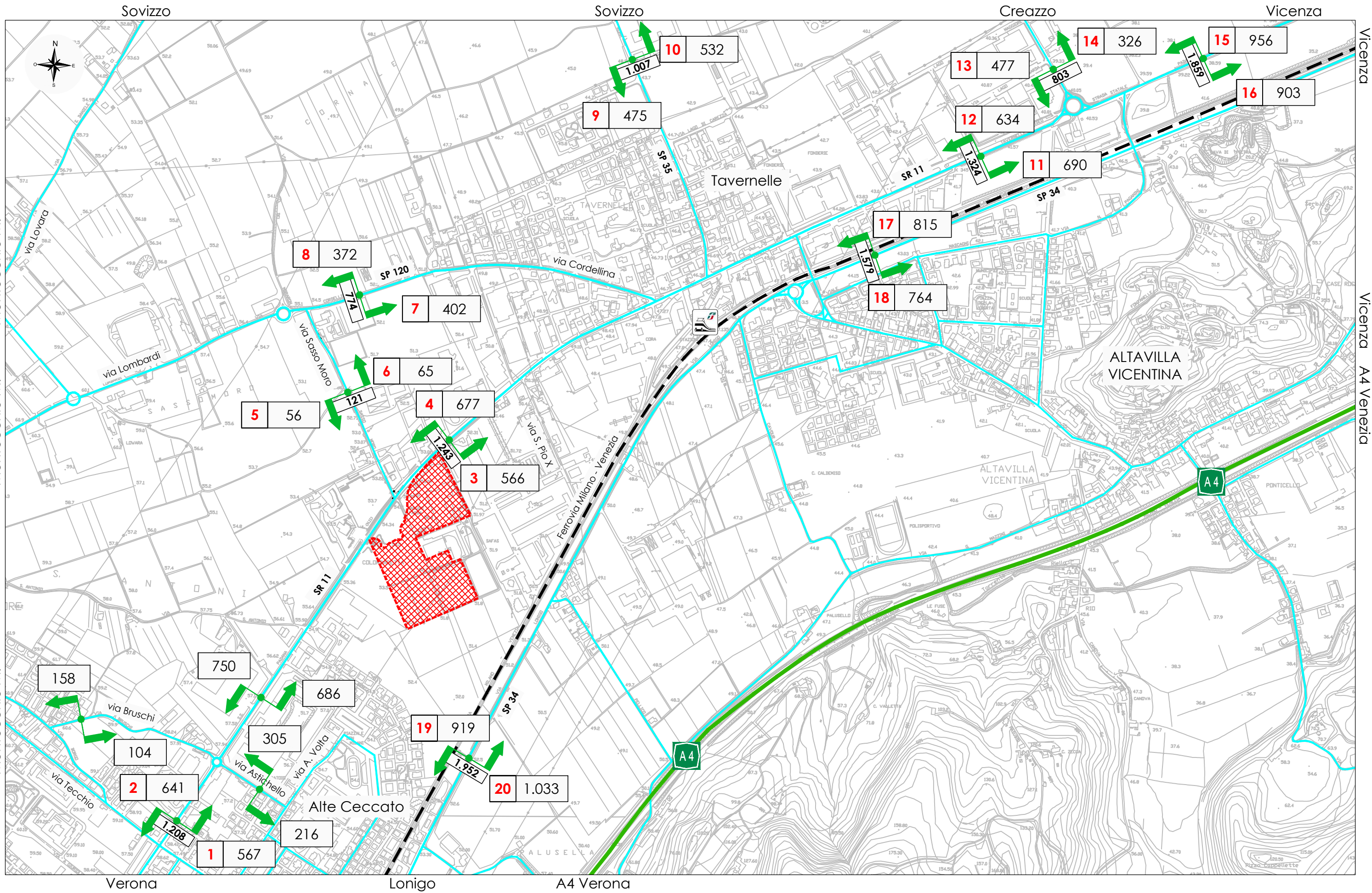


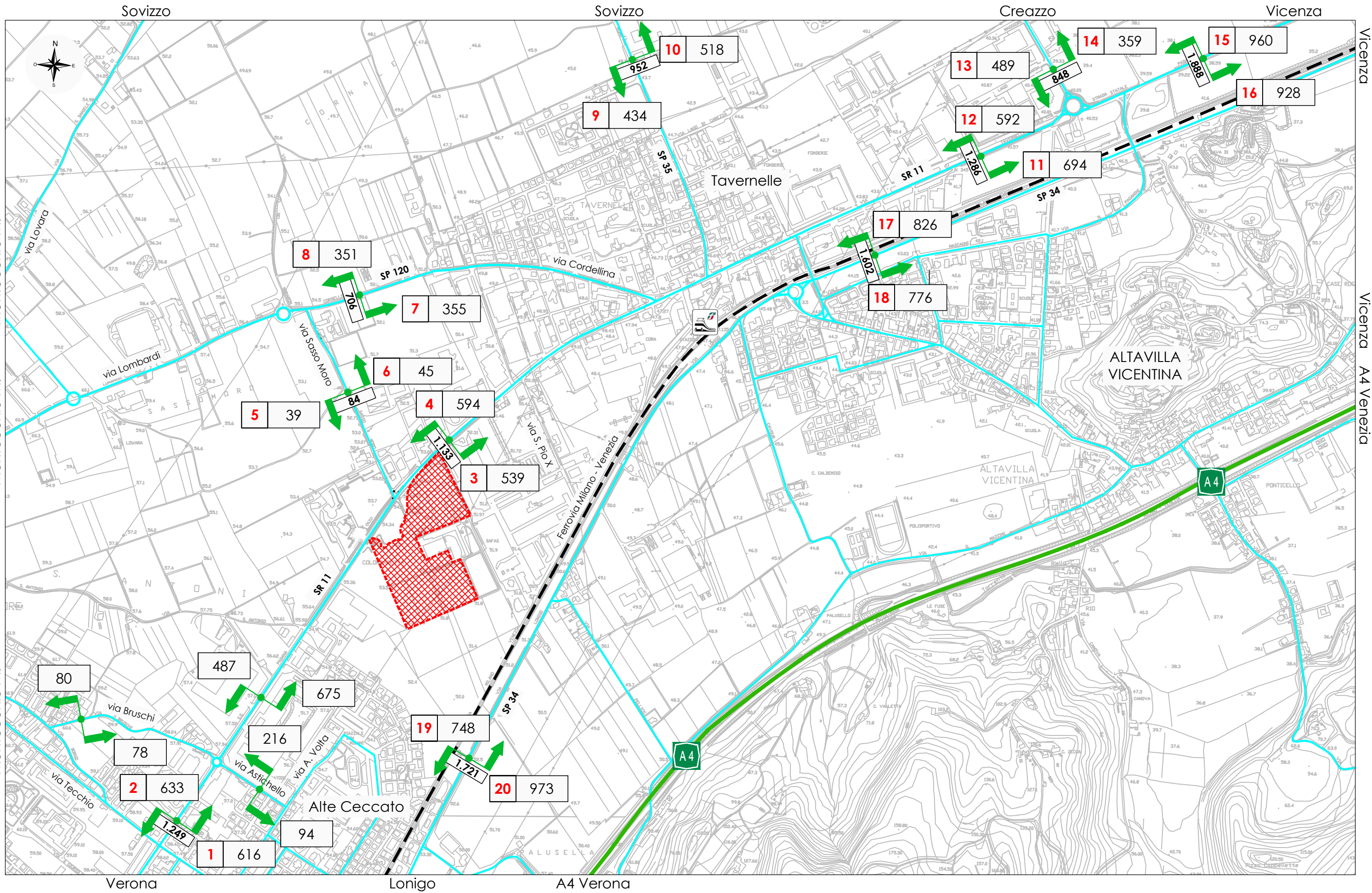


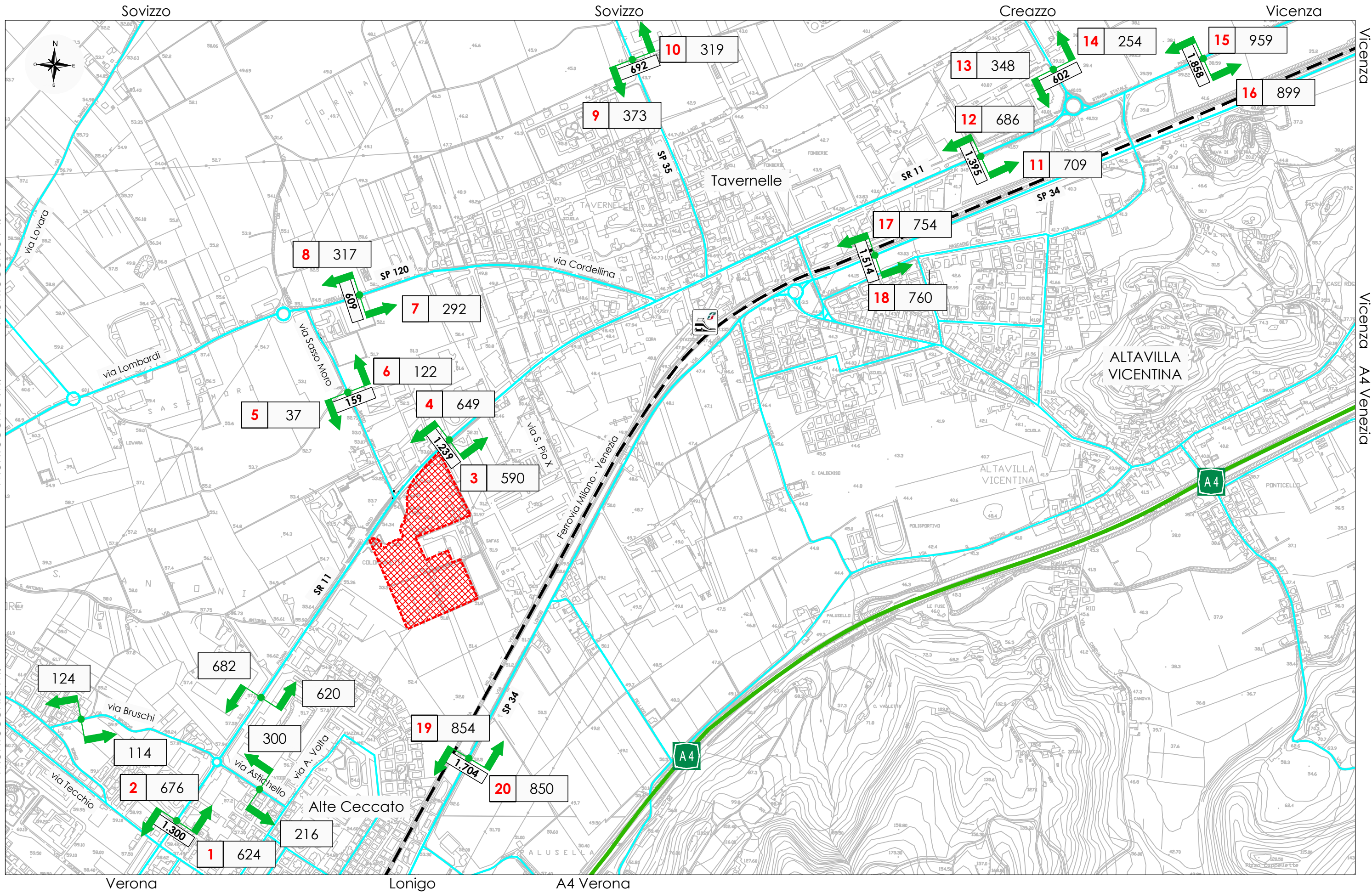


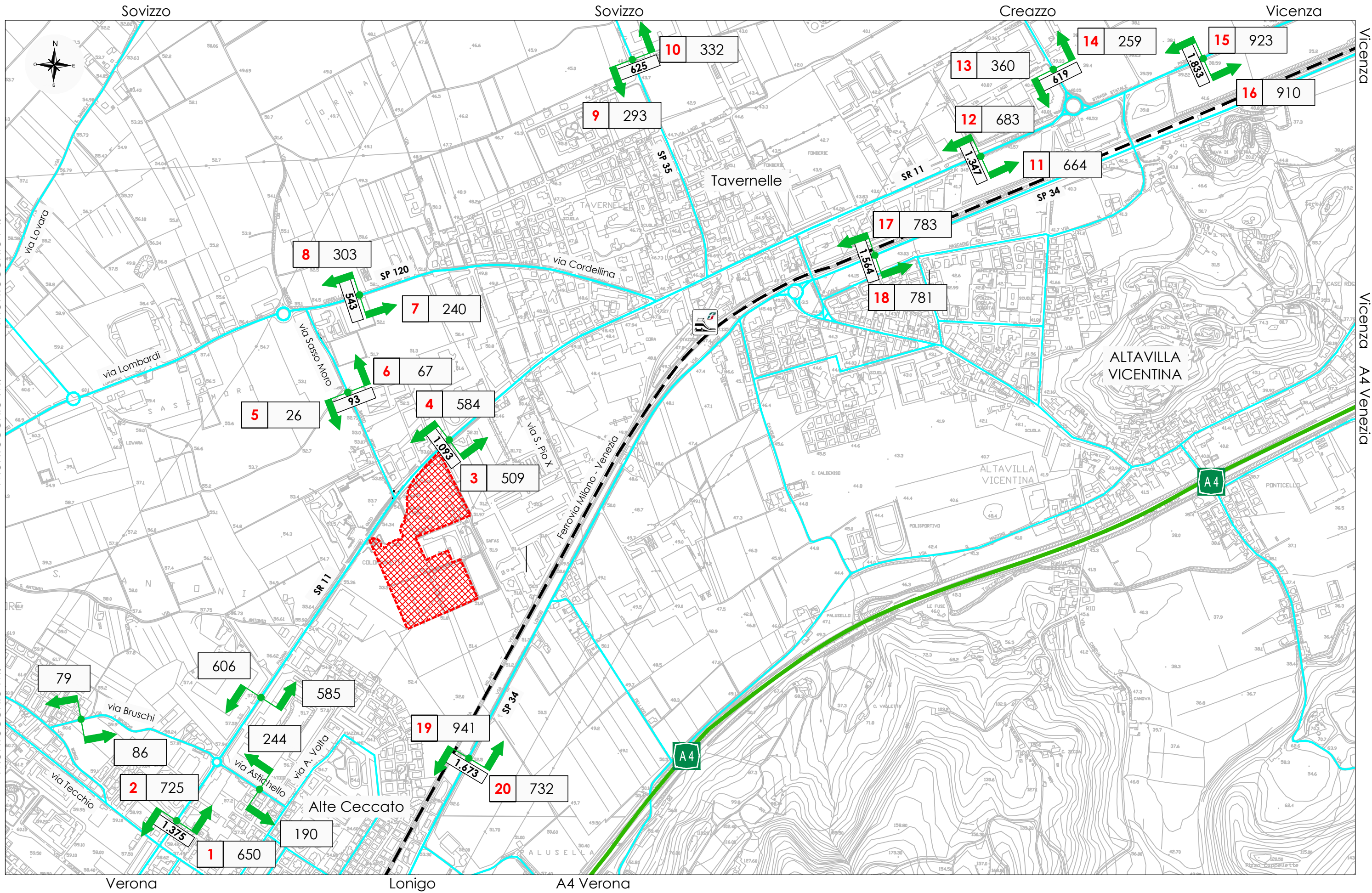
RIEPILOGO FLUSSI TGM

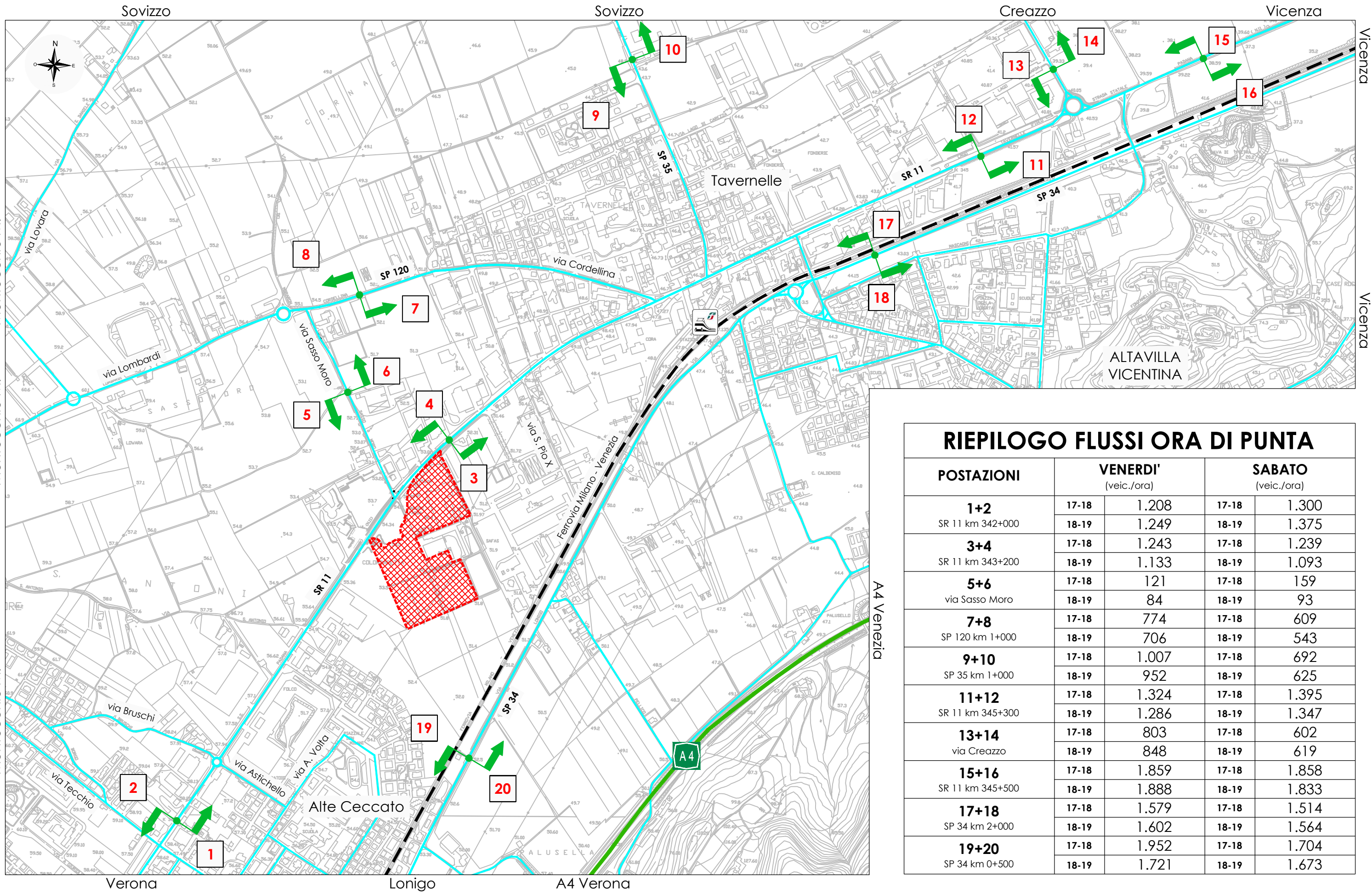
POSTAZIONI	TGM VENERDI' (veic./giorno)	TGM SABATO (veic./giorno)
1+2 SR 11 km 342+000	16.681	18.038
3+4 SR 11 km 343+200	17.618	17.308
5+6 via Sasso Moro	1.815	1.497
7+8 SP 120 km 1+000	10.109	7.093
9+10 SP 35 km 1+000	11.147	9.078
11+12 SR 11 km 345+300	19.563	20.217
13+14 via Creazzo	12.611	9.559
15+16 SR 11 km 345+500	28.592	26.953
17+18 SP 34 km 2+000	20.838	18.397
19+20 SP 34 km 0+500	24.413	21.982











RIEPILOGO FLUSSI ORA DI PUNTA

POSTAZIONI	VENERDI'		SABATO	
	17-18	18-19	17-18	18-19
1+2 SR 11 km 342+000	17-18	1.208	17-18	1.300
	18-19	1.249	18-19	1.375
3+4 SR 11 km 343+200	17-18	1.243	17-18	1.239
	18-19	1.133	18-19	1.093
5+6 via Sasso Moro	17-18	121	17-18	159
	18-19	84	18-19	93
7+8 SP 120 km 1+000	17-18	774	17-18	609
	18-19	706	18-19	543
9+10 SP 35 km 1+000	17-18	1.007	17-18	692
	18-19	952	18-19	625
11+12 SR 11 km 345+300	17-18	1.324	17-18	1.395
	18-19	1.286	18-19	1.347
13+14 via Creazzo	17-18	803	17-18	602
	18-19	848	18-19	619
15+16 SR 11 km 345+500	17-18	1.859	17-18	1.858
	18-19	1.888	18-19	1.833
17+18 SP 34 km 2+000	17-18	1.579	17-18	1.514
	18-19	1.602	18-19	1.564
19+20 SP 34 km 0+500	17-18	1.952	17-18	1.704
	18-19	1.721	18-19	1.673

