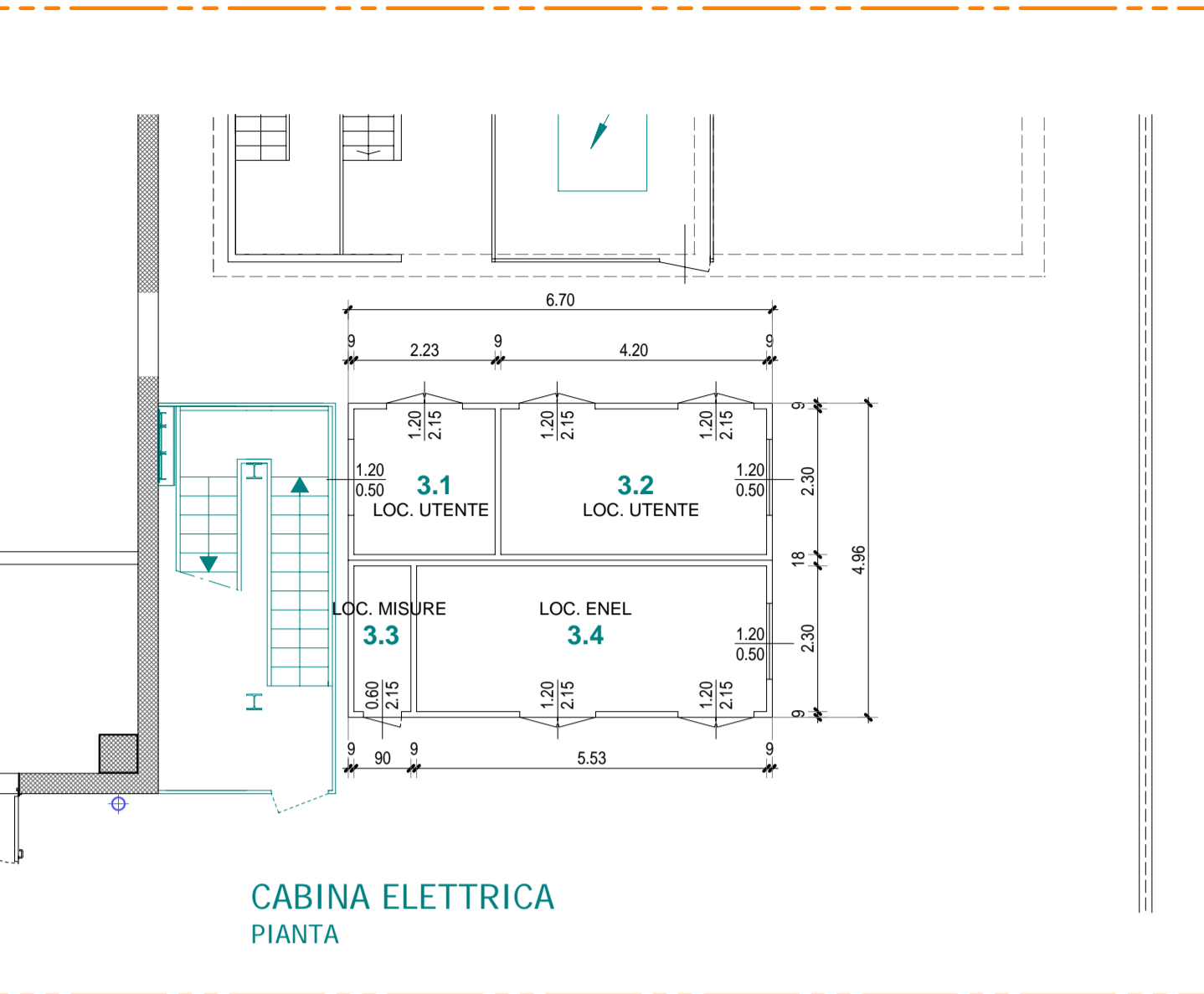
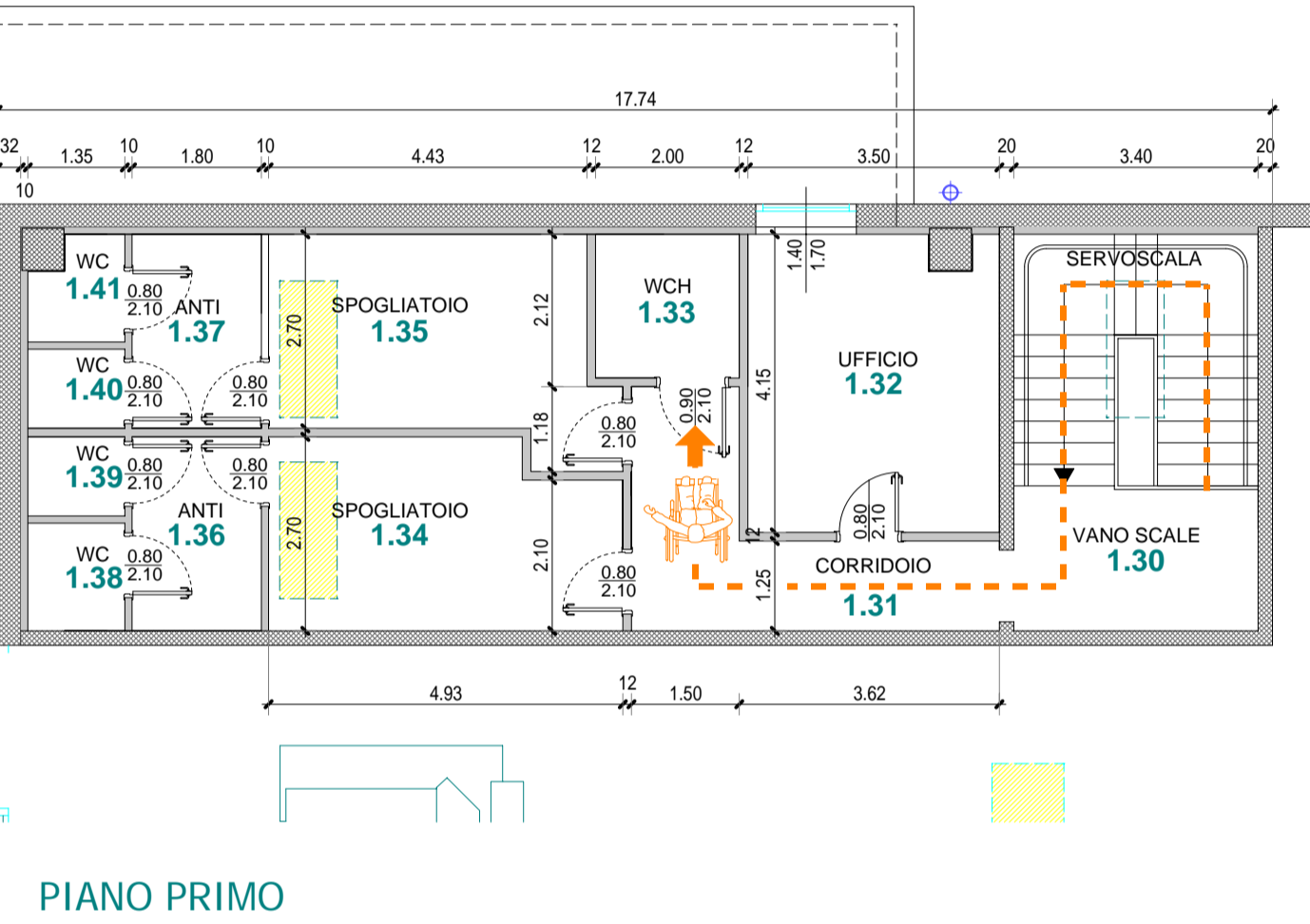
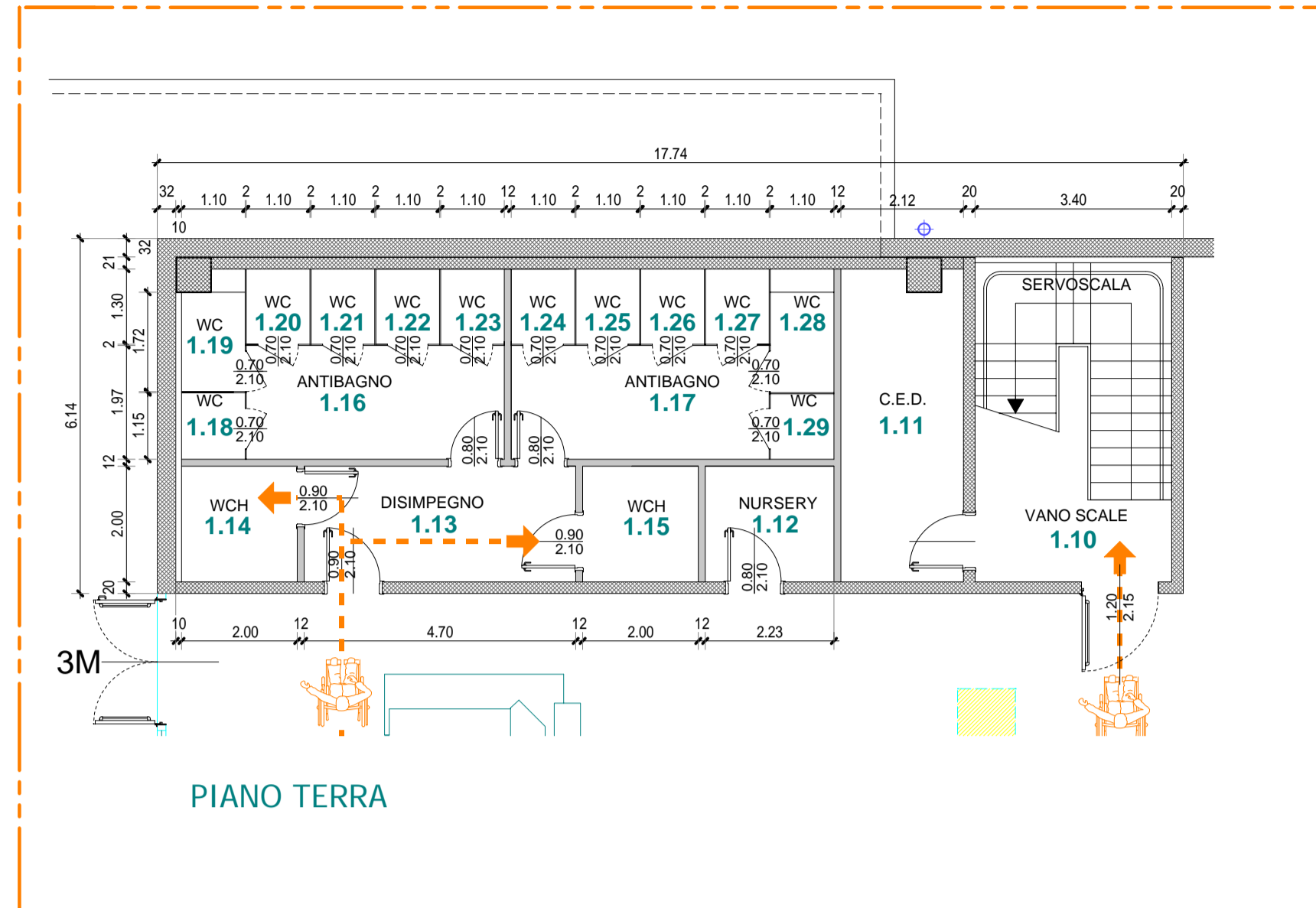


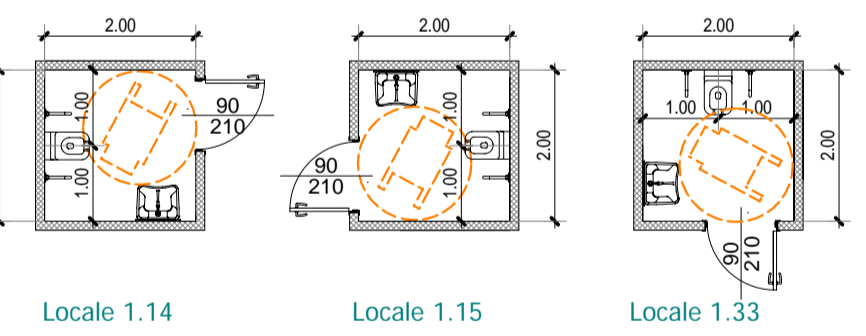
INGRANDIMENTO PART. 2 SCALA 1:100



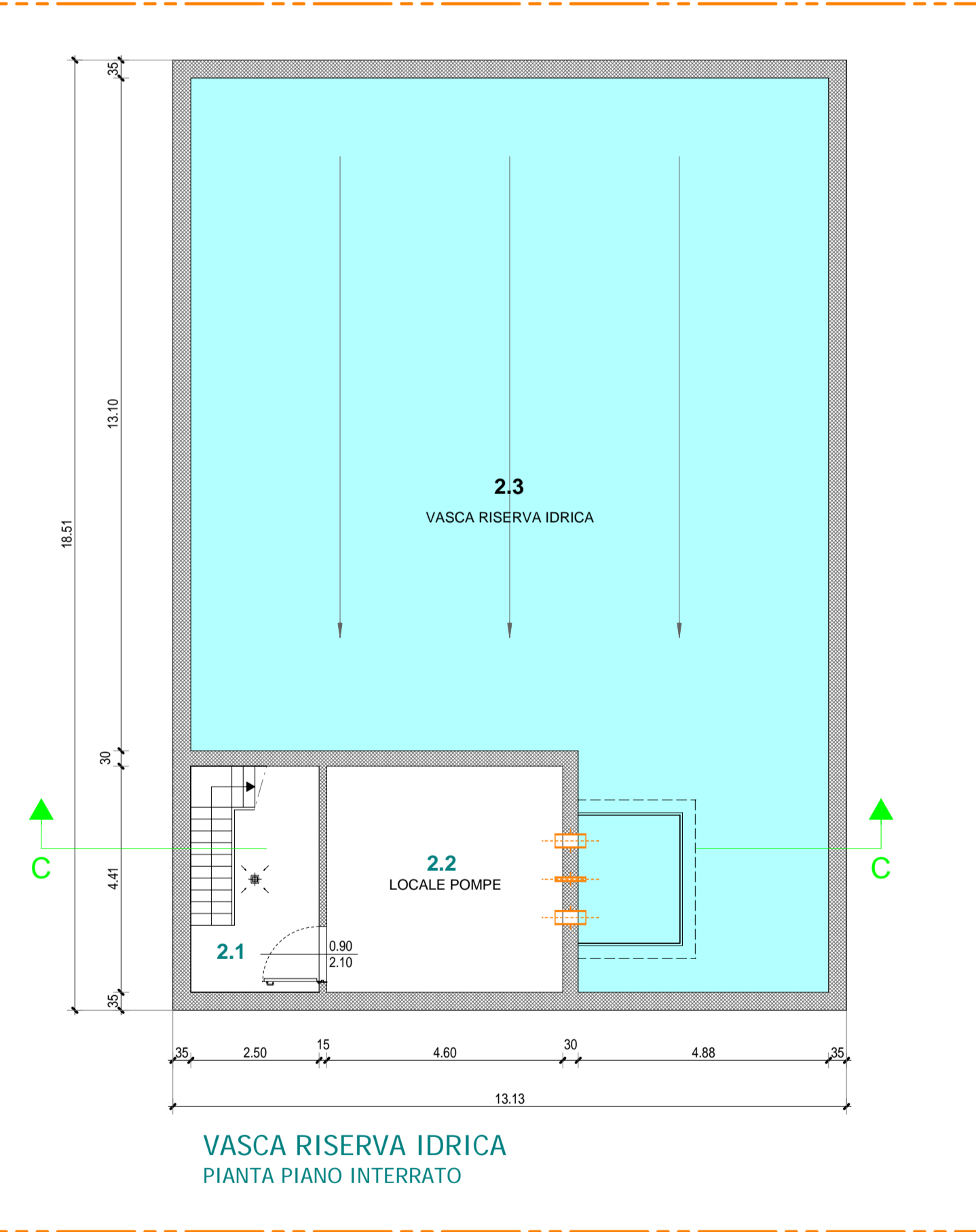
INGRANDIMENTO PART. 1 SCALA 1:100



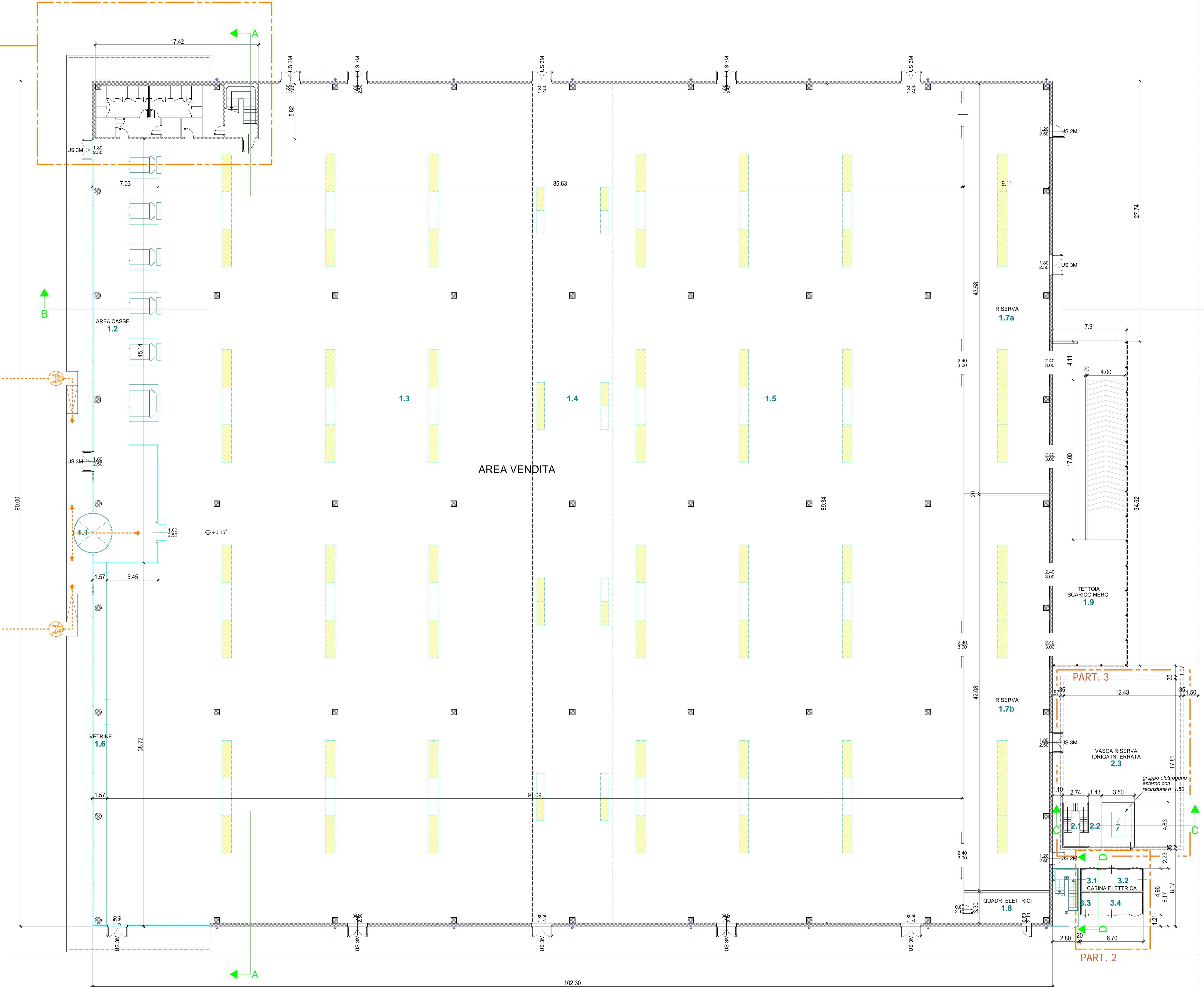
DIMOSTRAZIONE ACCESSIBILITA' AI SERVIZI IGIENICI (D.M. 236/89)
Tutti i servizi per disabili sono provvisti di vaso accessibile da entrambi i lati (D.G.R. 509/2010 Allegato A figura 9)



INGRANDIMENTO PART. 3 SCALA 1:100

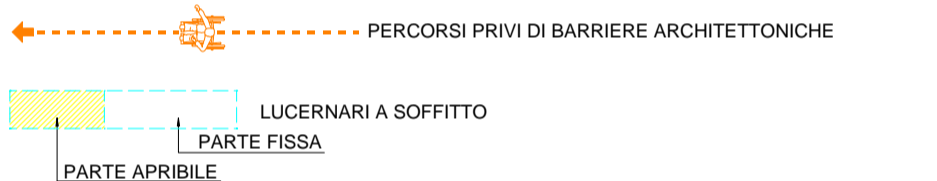


PART. 1



PIANTA PIANO TERRA SCALA 1:200

TABELLA RIEPILOGATIVA DEI RAPPORTI AEROILLUMINANTI											
n.	descrizione	superficie m²	h m	volume m³	sup. illuminante m²		sup. aerante m²	rapporto	sup. aerante m²	rapporto	note
					necessaria	effettiva					
FABBRICATO PRINCIPALE											
1.1	BASSOLA INGRESSO	8.95	2.90	17.38	---	---	---	---	---	---	scali stato di ventilazione artificiale
1.2	AREA CASSE	306.80	7.65	2347.02	10.23	150.00	>1700	3.07	---	---	>1700
1.3	AREA VENDITA	3712.04	7.65	28307.11	123.73	128.00	>1700	37.12	---	---	>1700
1.4	AREA VENDITA	729.58	7.02	5112.11	26.32	30.00	>1700	7.60	---	---	>1700
1.5	AREA VENDITA	3202.97	7.65	24511.91	110.90	128.00	>1700	32.03	---	---	>1700
1.6	VETRINE	52.07	7.65	398.34	---	---	---	---	---	---	scali stato di ventilazione artificiale
1.7a	DEPOSITO SCORTE	391.44	7.65	2984.42	13.25	24.00	>1700	13.25	---	---	>1700
1.7b	DEPOSITO SCORTE	383.76	7.65	2935.76	12.79	24.00	>1700	12.79	---	---	>1700
1.8	LOCALE QUADRI ELETTRICI	30.10	7.65	230.27	---	---	---	---	---	---	---
1.9	TETTOIA SCARICO MERCI	265.20	5.20	1388.64	---	---	---	---	---	---	---
1.10	VANO SCALE	19.06	2.70	51.46	---	---	---	---	---	---	---
1.11	C.E.D.	11.46	2.70	30.94	---	---	---	---	---	---	---
1.12	NURSERY	4.65	2.70	12.52	---	---	---	---	---	---	---
1.13	DIMSPEGNO	9.39	2.70	25.35	---	---	---	---	---	---	---
1.14	WC DISABILI	4.00	2.70	10.80	---	---	---	---	---	---	---
1.15	WC DISABILI	4.00	2.70	10.80	---	---	---	---	---	---	---
1.16	ANTIBAGNO	8.77	2.70	23.68	---	---	---	---	---	---	---
1.17	ANTIBAGNO	8.77	2.70	23.68	---	---	---	---	---	---	---
1.18	WC	1.27	2.70	3.43	---	---	---	---	---	---	---
1.19	WC	1.89	2.70	5.10	---	---	---	---	---	---	---
1.20	WC	1.43	2.70	3.86	---	---	---	---	---	---	---
1.21	WC	1.43	2.70	3.86	---	---	---	---	---	---	---
1.22	WC	1.43	2.70	3.86	---	---	---	---	---	---	---
1.23	WC	1.43	2.70	3.86	---	---	---	---	---	---	---
1.24	WC	1.43	2.70	3.86	---	---	---	---	---	---	---
1.25	WC	1.43	2.70	3.86	---	---	---	---	---	---	---
1.26	WC	1.43	2.70	3.86	---	---	---	---	---	---	---
1.27	WC	1.43	2.70	3.86	---	---	---	---	---	---	---
1.28	WC	1.89	2.70	5.10	---	---	---	---	---	---	---
1.29	WC	1.27	2.70	3.43	---	---	---	---	---	---	---
1.30	VANO SCALE	19.06	2.70	51.46	---	---	---	---	---	---	---
1.31	CORRIDOIO	9.62	2.70	25.97	---	---	---	---	---	---	---
1.32	UFFICIO	14.51	2.70	39.18	1.81	1.84	>1700	0.91	0.97	1.176	---
1.33	WC DISABILI	4.00	2.70	10.80	---	---	---	---	---	---	---
1.34	SPOGLIATOIO	12.46	2.70	33.64	1.25	1.88	>1700	0.62	1.00	>1700	---
1.35	SPOGLIATOIO	13.01	2.70	35.13	1.30	1.50	>1700	0.65	1.00	>1700	---
1.36	ANTIBAGNO	1.34	2.70	3.62	---	---	---	---	---	---	---
1.37	ANTIBAGNO	1.34	2.70	3.62	---	---	---	---	---	---	---
1.38	WC	2.02	2.70	5.45	---	---	---	---	---	---	---
1.39	WC	1.49	2.70	4.02	---	---	---	---	---	---	---
1.40	WC	1.49	2.70	4.02	---	---	---	---	---	---	---
1.41	WC	1.76	2.70	4.75	---	---	---	---	---	---	---
VASCA RISERVA IDRICA INTERRATA											
2.1	SCALE ACCESSO VASCA	7.27	2.70	19.63	---	---	---	---	---	---	---
2.2	LOCALE POMPE	24.45	2.70	66.02	---	---	---	---	---	---	---
2.3	VASCA RISERVA IDRICA	185.81	2.70	501.69	---	---	---	---	---	---	---
CABINA ELETTRICA											
3.1	CABINA ELETTRICA LOC. UTENTE	5.13	2.70	13.85	---	---	---	---	---	---	---
3.2	CABINA ELETTRICA LOC. UTENTE	9.86	2.70	26.68	---	---	---	---	---	---	---
3.3	CABINA ELETTRICA LOC. MISURE	2.07	2.70	5.59	---	---	---	---	---	---	---
3.4	CABINA ELETTRICA LOC. ENEL	12.72	2.70	34.34	---	---	---	---	---	---	---



REGIONE DEL VENETO PROVINCIA DI VICENZA COMUNE DI TORRI DI QUARTESOLO

VALUTAZIONE IMPATTO AMBIENTALE EDIFICI A-E PARCO COMMERCIALE "LE PIRAMIDI"

D.Lgs. 3 Aprile 2006 n. 152 e ss.mm.ii.
Legge Regionale del Veneto 18 Febbraio 2016 n. 4

ELABORATI PROGETTUALI EDIFICIO "A"

OGGETTO: PIANTE PIANI INTERRATO, TERRA E PRIMO TAV. N. 02

PROPRONTE: Iniziative Industriali S.p.A. PROGETTISTA: Arch. Gaetano Ingui REDATTORE VIA: elena barbato ingegnere ambientale

Via dell'Economia, n. 84 36100 Vicenza (VI) Tel: 0444 267116 Via dell'Economia, n. 90 36100 Vicenza (VI) Tel: 0444 961818

SCALA: 1:200-1:100 DATA: Dicembre 2016 FILE: 16/03-pt51

+39 243 6781707
elena.barbato@ipa.com
elena.barbato@ingepi.eu
via xx settembre, 64 - 35014 piazzola sul brencà-padova