

36071 - ARZIGNANO (Vicenza) - Via Vespucci, 7
Tel. 0444/452144 - Fax 0444/452155
email: info@dedalab.com
url: http://www.dedalab.com

Codice fiscale e Partita IVA n.00894730241
Iscriz. R.E.A. n.204688
Cap.Soc. € 10.400,00 i.v.

Spett.le
ILSA Spa
Via Quinta Strada, 28 - Z.I.- C.P. 160
ARZIGNANO
36071 VI

Test Report N° V00305

Sheet n° 1 di 11

Sample Description

Ricevimento/Ordination date	15/01/2018
Descrizione del campione/Sample description	AGROGEL + WW1
Data campionamento/Sampling date	15/01/2018
Data inizio analisi/Beginning analysis date	24/01/2018
Data fine analisi/Ending analysis date	08/02/2018

Parameter description	Um	Value	Method
* Aluminium (as Al) # Alluminio (come Al)	mg/Kg	238.9	APAT CNR IRSA 3020 Man 29: 2003
* Antimony (as Sb) # Antimonio (come Sb)	mg/Kg	< 0.1	APAT CNR IRSA 3020 Man 29: 2003
* Arsenic (as As) # Arsenico (come As)	mg/Kg	< 0.1	APAT CNR IRSA 3020 Man 29: 2003
* Boron (as B) # Boro (come B)	mg/Kg	< 0.1	APAT CNR IRSA 3020 Man 29: 2003
* Cadmium (as Cd) # Cadmio (come Cd)	mg/Kg	< 0.1	APAT CNR IRSA 3020 Man 29: 2003
* Cobalt (as Co) # Cobalto (come Co)	mg/Kg	< 0.1	APAT CNR IRSA 3020 Man 29: 2003
* Mercury (as Hg) # Mercurio (come Hg)	mg/Kg	< 0.1	APAT CNR IRSA 3020 Man 29: 2003
* Nickel (as Ni) # Nichel (come Ni)	mg/Kg	< 0.1	APAT CNR IRSA 3020 Man 29: 2003

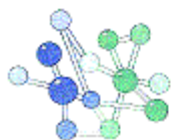
*
#

- Laboratory acknowledge to analysis of foods (n. 11 Regional List of VENETO)

- Analytical dates above-stated refer only to the sample given to laboratory. - The partial reproduction of this Test report is forbidden.

= analysis made by an external laboratory.

* = Try not subject to accreditation

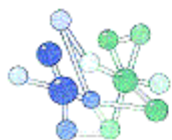


Test Report N° V00305			
Lead (as Pb)	mg/Kg	< 0.1	APAT CNR IRSA 3020 Man 29: 2003
* Piombo (come Pb)			
#			
Beryllium (as Be)	mg/Kg	< 0.1	APAT CNR IRSA 3020 Man 29: 2003
* Berillio (come Be)			
#			
Molybdenum (as Mo)	mg/Kg	< 0.1	APAT CNR IRSA 3020 Man 29: 2003
Molibdeno (come Mo)			
*			
# Silicium (as Si)	mg/Kg	165.0	EPA 3050B 1996+EPA 6010D: 2014
Silicio (come Si)			
*			
# Strontium (as Sr)	mg/Kg	16.9	APAT CNR IRSA 3020 Man 29: 2003
Stronzio (come Sr)			
*			
# Zirconium (as Zr)	mg/Kg	34.7	EPA 3050B 1996+EPA 6010D: 2014
Zirconio (come Zr)			
*			
# Chromium (as Cr)	mg/Kg	20278	APAT CNR IRSA 3020 Man 29: 2003
Cromo totale (come Cr)			
*			
Hexavalent chromium	mg/Kg s.s.	< 0.5	IRSACNR/64/PCF16: 1986
* Cromo esavalente (come Cr)			
#			
Ceneri totali	% s.s.	8.87	ISTISAN_96_34: 1996
*			
N,N-Dimethylformamide	mg/Kg	< 0.1	HPLC: 2000
* N,N-Dimethylformamide (cas 68-12-2)			
*			
Hydrocarbons and mineral oils	mg/Kg s.s.	18	IRSACNR/64/PCF21: 1988
* Idrocarburi e olii minerali totali			
*			
Composti organici alogenati totali	mg/Kg s.s.	< 1	EPA 5021a 2003 + EPA 8260c: 2017
*			
1,3-butadiene (cas 106-99-0)	mg/Kg s.s.	< 1	EPA 5021a 2003 + EPA 8260c: 2017
*			
1,5-pentandiolo (cas 111-29-5)	mg/Kg	< 1	EPA 5021a 2003 + EPA 8260D
*			
Solventi organici aromatici totali	mg/Kg s.s.	< 0.1	EPA 5021a 2003 + EPA 8260c: 2017
*			
Esame gascromatografico sostanze organiche estratte:	giudizio	Vedasi grafico allegato	EPA 3550c 2007 + EPA 8270d: 2014
*			
Idrocarburi policiclici aromatici (come somma)	mg/Kg s.s.	< 1	EPA 3550c 2007 + EPA 8270d: 2014
*			
Policlorobifenili (come somma)	mg/Kg s.s.	< 0.01	EPA 3550c 2007 + EPA 8270d: 2014
*			

* - Laboratory acknowledge to analysis of foods (n. 11 Regional List of VENETO)
- Analytical dates above-stated refer only to the sample given to laboratory. - The partial reproduction of this Test report is forbidden.

= analysis made by an external laboratory.

* = Try not subject to accreditation



	mg/Kg		
* Olii e grassi totali		10845.6	IRSACNR/64/PCF21: 1988
* 2,3-Dichlorobiphenyl (16605-91-7) #5	mg/Kg s.s.	< 0.01	EPA 3550c 2007 + EPA 8270d: 2014
Benzene (cas 71-43-2)	mg/Kg s.s.	< 0.1	EPA 5021a 2003 + EPA 8260c: 2017
Acenaphthene (cas 83-32-9)	mg/Kg s.s.	< 0.1	EPA 3550c 2007 + EPA 8270d: 2014
* 2,2',5-Trichlorobiphenyl (cas 37680-65-2) #18	mg/Kg s.s.	< 0.01	EPA 3550c 2007 + EPA 8270d: 2014
* Acenaphthylene (cas 208-96-8)	mg/Kg s.s.	< 0.1	EPA 3550c 2007 + EPA 8270d: 2014
Ethylbenzene (cas 100-41-4)	mg/Kg s.s.	< 0.1	EPA 5021a 2003 + EPA 8260c: 2017
2,4,4' - Trichlorobiphenyl (cas n. 7012-37-5) # 28	mg/Kg s.s.	< 0.01	EPA 3550c 2007 + EPA 8270d: 2014
Styrene (cas n. 100-42-5)	mg/Kg s.s.	< 0.1	EPA 5021a 2003 + EPA 8260c: 2017
Anthracene (cas 120-12-7)	mg/Kg s.s.	< 0.1	EPA 3550c 2007 + EPA 8270d: 2014
Benzo(a)antracene (cas 56-55-3)	mg/Kg s.s.	< 0.1	EPA 3550c 2007 + EPA 8270d: 2014
Toluene (cas 108-88-3)	mg/Kg s.s.	0.2	EPA 5021a 2003 + EPA 8260c: 2017
* 2,2',3,5'-Tetrachlorobiphenyl (cas 41464-39-5) #44	mg/Kg s.s.	< 0.01	EPA 3550c 2007 + EPA 8270d: 2014
Benzo(a)pyrene (cas 50-32-8)	mg/Kg s.s.	< 0.1	EPA 3550c 2007 + EPA 8270d: 2014
* Benzo(b)fluoranthene (cas 205-99-2)	mg/Kg s.s.	< 0.1	EPA 3550c 2007 + EPA 8270d: 2014
Xylene (come somma di isomeri)	mg/Kg s.s.	< 0.1	EPA 5021a 2003 + EPA 8260c: 2017
2,2',5,5'-Tetrachlorobiphenyl (cas 35693-99-3) #52	mg/Kg s.s.	< 0.01	EPA 3550c 2007 + EPA 8270d: 2014
Benzo(e)pyrene (cas 192-97-2)	mg/Kg s.s.	< 0.1	EPA 3550c 2007 + EPA 8270d: 2014

- Laboratory acknowledge to analysis of foods (n. 11 Regional List of VENETO)

- Analytical dates above-stated refer only to the sample given to laboratory. - The partial reproduction of this Test report is forbidden.

= analysis made by an external laboratory.

* = Try not subject to accreditation



Test Report N° V00305

LAB N° 0996

Sheet n° 4 di 11

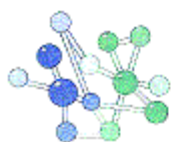
Benzo(g,h,i)perylene (cas 191-24-2)	mg/Kg s.s.	< 0.1	EPA 3550c 2007 + EPA 8270d: 2014
1,2-dimethylbenzene o-Xylene (cas 95-47-6)	mg/Kg s.s.	< 0.1	EPA 5021a 2003 + EPA 8260c: 2017
* 2,3',4,4'-Tetrachlorobiphenyl (cas 32598-10-0) #66	mg/Kg s.s.	< 0.01	EPA 3550c 2007 + EPA 8270d: 2014
* Benzo(k)fluoranthene (cas 207-08-9)	mg/Kg s.s.	< 0.1	EPA 3550c 2007 + EPA 8270d: 2014
* 3,3',4,4'-Tetrachlorobiphenyl (cas 32598-13-3) #77	mg/Kg s.s.	< 0.01	EPA 3550c 2007 + EPA 8270d: 2014
Benzo(j)fluoranthene (cas n. 205-82-3)	mg/Kg s.s.	< 0.1	EPA 3550c 2007 + EPA 8270d: 2014
3,4,4',5-Tetrachlorobiphenyl (cas 70362-50-4) #81	mg/Kg s.s.	< 0.01	EPA 3550c 2007 + EPA 8270d: 2014
* 2,2',3,4,5'-Pentachlorobiphenyl (cas 38380-02-8) #87	mg/Kg s.s.	< 0.01	EPA 3550c 2007 + EPA 8270d: 2014
2,2',3,5',6-pentachlorobiphenyl (cas 38379-99-6) #95	mg/Kg s.s.	< 0.01	EPA 3550c 2007 + EPA 8270d: 2014
2,2',4,4',5-Pentachlorobiphenyl (cas 38380-01-1) #99	mg/Kg s.s.	< 0.01	EPA 3550c 2007 + EPA 8270d: 2014
Chrysene (cas 218-01-9)	mg/Kg s.s.	< 0.1	EPA 3550c 2007 + EPA 8270d: 2014
* 2,2',4,5,5'-Pentachlorobiphenyl (cas 37680-73-2) #101	mg/Kg s.s.	< 0.01	EPA 3550c 2007 + EPA 8270d: 2014
* Dibenzo(a,e)pyrene (cas 192-65-4)	mg/Kg s.s.	< 0.1	EPA 3550c 2007 + EPA 8270d: 2014
2,3,3',4,4'-Pentachlorobiphenyl (cas 32598-14-4) #105	mg/Kg s.s.	< 0.01	EPA 3550c 2007 + EPA 8270d: 2014
2,3,3',4',6-Pentachlorobiphenyl (cas 38380-03-9) #110	mg/Kg s.s.	< 0.01	EPA 3550c 2007 + EPA 8270d: 2014
Dibenzo(a,h)anthracene (cas 53-70-3)	mg/Kg s.s.	< 0.1	EPA 3550c 2007 + EPA 8270d: 2014

- Laboratory acknowledge to analysis of foods (n. 11 Regional List of VENETO)

- Analytical dates above-stated refer only to the sample given to laboratory. - The partial reproduction of this Test report is forbidden.

= analysis made by an external laboratory.

* = Try not subject to accreditation



Test Report N° V00305

LAB N° 0996

Sheet n° 5 di 11

* Dibenzo(a,h)pyrene (cas 189-64-0)	mg/Kg s.s.	< 0.1	EPA 3550c 2007 + EPA 8270d: 2014
* Dibenzo(a,i)pyrene (cas 189-55-9)	mg/Kg s.s.	< 0.1	EPA 3550c 2007 + EPA 8270d: 2014
* Dibenzo(a,l)pyrene (cas 191-30-0)	mg/Kg s.s.	< 0.1	EPA 3550c 2007 + EPA 8270d: 2014
2,3,4,4',5-Pentachlorobiphenyl (cas 74472-37-0) # 114	mg/Kg s.s.	< 0.01	EPA 3550c 2007 + EPA 8270d: 2014
2,3',4,4',5-Pentachlorobiphenyl (cas 31508-00-6) # 118	mg/Kg s.s.	< 0.01	EPA 3550c 2007 + EPA 8270d: 2014
Fluoranthene (cas n. 206-44-0)	mg/Kg s.s.	< 0.1	EPA 3550c 2007 + EPA 8270d: 2014
2',3,4,4',5-Pentachlorobiphenyl (cas 65510-44-3) # 123	mg/Kg s.s.	< 0.01	EPA 3550c 2007 + EPA 8270d: 2014
3,3',4,4',5-Pentachlorobiphenyl (cas 57465-28-8) # 126	mg/Kg s.s.	< 0.01	EPA 3550c 2007 + EPA 8270d: 2014
2,2',3,3',4,4'-Hexachlorobiphenyl (cas 38380-07-3) #128	mg/Kg s.s.	< 0.01	EPA 3550c 2007 + EPA 8270d: 2014
Fluorene (cas 86-73-7)	mg/Kg s.s.	< 0.1	EPA 3550c 2007 + EPA 8270d: 2014
* 2,2',3,4,4',5'-Hexachlorobiphenyl (cas 35065-28-2) #138	mg/Kg s.s.	< 0.01	EPA 3550c 2007 + EPA 8270d: 2014
Indeno(1,2,3-cd)pyrene (cas n. 193-39-5)	mg/Kg s.s.	< 0.1	EPA 3550c 2007 + EPA 8270d: 2014
* 2,2',3,4,5,5'-Hexachlorobiphenyl (cas 52712-04-6) #141	mg/Kg s.s.	< 0.01	EPA 3550c 2007 + EPA 8270d: 2014
2,2',3,4',5,5'-Hexachlorobiphenyl (cas 51908-16-8) #146	mg/Kg s.s.	< 0.01	EPA 3550c 2007 + EPA 8270d: 2014
2,2',3,4',5',6-Hexachlorobiphenyl (cas 38380-04-0) #149	mg/Kg s.s.	< 0.01	EPA 3550c 2007 + EPA 8270d: 2014

- Laboratory acknowledge to analysis of foods (n. 11 Regional List of VENETO)

- Analytical dates above-stated refer only to the sample given to laboratory. - The partial reproduction of this Test report is forbidden.

= analysis made by an external laboratory.

* = Try not subject to accreditation



Test Report N° V00305

LAB N° 0996

Sheet n° 6 di 11

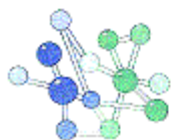
Naphthalene (cas 91-20-3)	mg/Kg s.s.	< 0.1	EPA 3550c 2007 + EPA 8270d: 2014
2,2',4,4',5,5'-Hexachlorobiphenyl (cas 35065-27-1) #153	mg/Kg s.s.	< 0.01	EPA 3550c 2007 + EPA 8270d: 2014
* Perylene (cas 198-55-0)	mg/Kg s.s.	< 0.1	EPA 3550c 2007 + EPA 8270d: 2014
2,3,3',4,4',5-Hexachlorobiphenyl (cas 38380-08-4) #156	mg/Kg s.s.	< 0.01	EPA 3550c 2007 + EPA 8270d: 2014
2,3,3',4,4',5'-Hexachlorobiphenyl (cas 69782-90-7) #157	mg/Kg s.s.	< 0.01	EPA 3550c 2007 + EPA 8270d: 2014
* 2,3,3',4,5,5'-Hexachlorobiphenyl (cas 39635-35-3) #159	mg/Kg s.s.	< 0.01	EPA 3550c 2007 + EPA 8270d: 2014
Phenanthrene (cas 85-01-8)	mg/Kg s.s.	< 0.1	EPA 3550c 2007 + EPA 8270d: 2014
2,3',4,4',5,5'-Hexachlorobiphenyl (cas 52663-72-6) #167	mg/Kg s.s.	< 0.01	EPA 3550c 2007 + EPA 8270d: 2014
3,3',4,4',5,5'-Hexachlorobiphenyl (cas 32774-16-6) #169	mg/Kg s.s.	< 0.01	EPA 3550c 2007 + EPA 8270d: 2014
2,2',3,3',4,4',5-Heptachlorobiphenyl (cas 35065-30-6) #170	mg/Kg s.s.	< 0.01	EPA 3550c 2007 + EPA 8270d: 2014
Pyrene (cas 129-00-0)	mg/Kg s.s.	< 0.1	EPA 3550c 2007 + EPA 8270d: 2014
2,2',3,3',4',5,6-Heptachlorobiphenyl (cas 52663-70-4) #177	mg/Kg s.s.	< 0.01	EPA 3550c 2007 + EPA 8270d: 2014
2,2',3,4,4',5,5'-Heptachlorobiphenyl (cas 35065-29-3) #180	mg/Kg s.s.	< 0.01	EPA 3550c 2007 + EPA 8270d: 2014
2,2',3,4,4',5',6-Heptachlorobiphenyl (cas 52663-69-1) #183	mg/Kg s.s.	< 0.01	EPA 3550c 2007 + EPA 8270d: 2014

- Laboratory acknowledge to analysis of foods (n. 11 Regional List of VENETO)

- Analytical dates above-stated refer only to the sample given to laboratory. - The partial reproduction of this Test report is forbidden.

= analysis made by an external laboratory.

* = Try not subject to accreditation



Test Report N° V00305

LAB N° 0996

Sheet n° 7 di 11

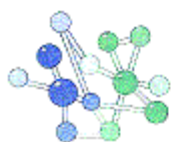
2,2',3,4',5,5',6-Heptachlorobiphenyl (cas 52663-68-0)#187	mg/Kg s.s.	< 0.01	EPA 3550c 2007 + EPA 8270d: 2014
2,3,3',4,4',5,5'-Heptachlorobiphenyl (cas 39635-31-9) #189	mg/Kg s.s.	< 0.01	EPA 3550c 2007 + EPA 8270d: 2014
* 2,2',3,3',4,4',5,5',6-Nonachlorobiphenyl (cas 40186-72-9) #206	mg/Kg s.s.	< 0.01	EPA 3550c 2007 + EPA 8270d: 2014
4-chloro-3-methylphenol (cas 59-50-7) 4-cloro-3-metilfenolo (cas 59-50-7)	mg/Kg	16.8	UNI EN ISO 13365: 2011
o-phenylphenol * o-fenilfenolo (cas 90-43-7)	mg/Kg	7.3	UNI EN ISO 13365: 2011
OIT * 2-n-octyl-4-isothiazol-3(2H)-one (26530-20-1)	mg/Kg	< 0.1	UNI EN ISO 13365: 2011
TCMTB * 2-(tiocianometiltio)-benzotiazolo (cas 21564-17-0)	mg/Kg	< 0.01	UNI EN ISO 13365: 2011
Short-chain chlorinated paraffins * Cloroparaffine (C10 - C13 - cas 85535-84-8)	mg/Kg	< 5	DIN EN ISO 18219
Medium-chain chlorinated paraffins * Cloroparaffine (C14 - C17)	mg/Kg	< 5	DIN EN ISO 18219
TCEP * Tris-(2-chloroethyl)phosphate (TCEP - cas 115-96-8)	mg/Kg	< 1	EPA Met 8270 d: 2017
TEPA * Ossido di tris(aziridinil)fosfina (cas 5455-55-1)	mg/Kg	< 0.1	EPA Met 8270 d: 2017
* Tris(2-chloro-1-methyl)ethyl)phosphate (TCPP - cas 13674-84-5)	mg/Kg	< 1	EPA Met 8270 d: 2017
TRIS * Tris-(2,3-dibromopropil)fosfate (cas 126-72-7)	mg/Kg	< 0.1	EPA Met 8270 d: 2017
* Tris-[2-chloro-1-(chloromethyl)ethyl]phosphate (TDCPP - cas 13674-87-8)	mg/Kg	< 1	EPA Met 8270 d: 2017
Hexabromocyclododecane and diastereoisomers * Hexabromocyclododecane (HCBDD) and diastereoisomers	mg/Kg	< 10	EPA Met 1614: 2003
* PentaBromoDifenilEtere (cas 32534-81-9)	mg/Kg	< 10	EPA Met 1614: 2003

- Laboratory acknowledge to analysis of foods (n. 11 Regional List of VENETO)

- Analytical dates above-stated refer only to the sample given to laboratory. - The partial reproduction of this Test report is forbidden.

= analysis made by an external laboratory.

* = Try not subject to accreditation



Test Report N° V00305

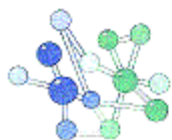
* OctaBromoDifenilEtere (cas 32536-52-0)	mg/Kg	< 10	EPA Met 1614: 2003
Dichlorophenol (as isomers sum)	mg/Kg	< 0.5	UNI EN ISO 17070: 2015
* Diclorofenolo (come somma di isomeri)			
trichlorophenol (as isomers sum)	mg/Kg	< 0.5	UNI EN ISO 17070: 2015
* Triclorofenolo (come somma di isomeri)			
Tetrachlorophenol (as isomers sum)	mg/Kg	< 0.5	UNI EN ISO 17070: 2015
* Tetraclorofenolo (come somma di isomeri)			
Pentachlorophenol	mg/Kg	< 0.5	UNI EN ISO 17070: 2015
* Pentaclorofenolo (cas 87-86-5)			
Determination of formaldehyde content	mg/Kg	7.5	PdL: 2011
* Formaldeide libera e combinata			
Acetaldehyde (cas 75-07-0)	mg/Kg	2.8	PdL: 2011
* Acetaldeide (cas 75-07-0)			
Glutaraldehyde (cas 111-30-8)	mg/Kg	< 1	PdL: 2011
* Glutaraldeide (cas 111-30-8)			
	mg/Kg	< 1	UNI EN ISO 17226-1: 2008
* 4-hydroxy-3-(3-oxopropyl)cyclohexene-1-carbaldehyde			
Forbidden Arylamines in according to Reg. 1907/2006 CE	-	-	-
* Ammine vietate in accordo al Reg. 1907/2006 CE			
4-aminobiphenyl	mg/Kg	< 30	UNI EN ISO 17234-1@2010: 2010
* 4-amminobifenile (cas 92-67-1)			
Benzidine (cas 92-87-5)	mg/Kg	< 30	UNI EN ISO 17234-1@2010: 2010
* Benzidina (cas 92-87-5)			
4-chloro-o-toluidine (cas 95-69-2)	mg/Kg	< 30	UNI EN ISO 17234-1@2010: 2010
* 4-cloro-o-toluidina (cas 95-69-2)			
2-naphthylamine (cas 91-59-8)	mg/Kg	< 30	UNI EN ISO 17234-1@2010: 2010
* 2-naftilammina (cas 91-59-8)			
o-aminoazotoluene	mg/Kg	< 30	UNI EN ISO 17234-1@2010: 2010
* o-amminoazotoluene (cas 97-56-3)			
2-amino-4-nitrotoluene (cas 99-55-8)	mg/Kg	< 30	UNI EN ISO 17234-1@2010: 2010
* 2-ammino-4-nitrotoluene (cas 99-55-8)			
p-chloroaniline (cas 106-47-8)	mg/Kg	< 30	UNI EN ISO 17234-1@2010: 2010
* p-cloroanilina (cas 106-47-8)			

- Laboratory acknowledge to analysis of foods (n. 11 Regional List of VENETO)

- Analytical dates above-stated refer only to the sample given to laboratory. - The partial reproduction of this Test report is forbidden.

= analysis made by an external laboratory.

* = Try not subject to accreditation



LAB N° 0996

Sheet n° 9 di 11

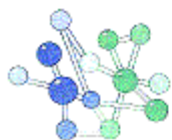
Substance	Unit	Result	Reference
2,4-diaminoanisole (cas 615-05-4)	mg/Kg	< 30	UNI EN ISO 17234-1@2010: 2010
* 2,4-diamminoanisolo (cas 615-05-4)			
4,4-diaminodiphenylmethane (cas 101-77-9)	mg/Kg	< 30	UNI EN ISO 17234-1@2010: 2010
* 4,4'-diamminodifenilmetano (cas 101-77-9)			
3,3-dichlorobenzidine (cas 91-94-1)	mg/Kg	< 30	UNI EN ISO 17234-1@2010: 2010
* 3,3-diclorobenzidina (cas 91-94-1)			
	mg/Kg	< 30	UNI EN ISO 17234-1@2010: 2010
* 3,3'-dimetossibenzidina (cas 119-90-4)			
	mg/Kg	< 30	UNI EN ISO 17234-1@2010: 2010
* 3,3'-dimetilbenzidina (cas 119-93-7)			
4,4'-Diamino-3,3'-dimethyldiphenylmethane	mg/Kg	< 30	UNI EN ISO 17234-1@2010: 2010
* 3,3'-dimetil-4,4'-diaminodifenilmetano (cas 838-88-0)			
p-cresidine	mg/Kg	< 30	UNI EN ISO 17234-1@2010: 2010
* p-cresidina (cas 120-71-8)			
4,4-methylenbis(2,2'-dichloroaniline)	mg/Kg	< 30	UNI EN ISO 17234-1@2010: 2010
* 4,4'-metilenbis(2,2'-dicloroanilina) (cas 101-14-4)			
4,4'-oxydianiline	mg/Kg	< 30	UNI EN ISO 17234-1@2010: 2010
* 4,4'-ossidianilina (cas 101-80-4)			
4,4-thiodianiline (cas 139-65-1)	mg/Kg	< 30	UNI EN ISO 17234-1@2010: 2010
* 4,4'-thiodianilina (cas 139-65-1)			
o-Toluidine (cas 95-53-4)	mg/Kg	< 30	UNI EN ISO 17234-1@2010: 2010
* o-toluidina (cas 95-53-4)			
2,4-toluendiamine	mg/Kg	< 30	UNI EN ISO 17234-1@2010: 2010
* 2,4-toluendiammina (cas 95-80-7)			
2,4,5 trimethylaniline (cas 137-17-7)	mg/Kg	< 30	UNI EN ISO 17234-1@2010: 2010
* 2,4,5 trimetilnilina (cas 137-17-7)			
o-anisidine	mg/Kg	< 30	UNI EN ISO 17234-1@2010: 2010
* o-anisidina (cas 90-04-0)			
4-aminoazobenzene	mg/Kg	< 30	UNI EN ISO 17234-1@2010: 2010
* 4-aminoazobenzene (cas 60-09-3)			
Other Forbidden Arylamines in some ecological labels	-	-	-
Altre Ammine vietate da alcuni marchi ecologici			
2,4 xylidine (cas 95-68-1)	mg/Kg	< 30	UNI EN ISO 17234-1@2010: 2010
* 2,4 xylidina (cas 95-68-1)			
2,6-xylidine (cas 87-62-7)	mg/Kg	< 30	UNI EN ISO 17234-1@2010: 2010
* 2,6 xylidina (cas 87-62-7)			

- Laboratory acknowledge to analysis of foods (n. 11 Regional List of VENETO)

- Analytical dates above-stated refer only to the sample given to laboratory. - The partial reproduction of this Test report is forbidden.

= analysis made by an external laboratory.

* = Try not subject to accreditation



Test Report N° V00305

aniline	mg/Kg	< 30	UNI EN ISO 17234-1@2010: 2010
* anilina (cas 62-53-3)			
	mg/Kg	< 30	UNI EN ISO 17234-1@2010: 2010
* 1,4-phenyldiamine (cas 106-50-3)			
Mineralization of the sample	-	-	APAT CNR IRSA 3010/A Man 29: 2003
* Mineralizzazione del campione			
Ethoxylated nonyl phenol	mg/kg	< 10	HPLC-MS: 2013
* Nonilfenolo etossilato (NPEO cas 9016-45-9)			
Nonyl phenol	mg/Kg	< 10	HPLC-MS: 2013
* Nonilfenolo (cas 25154-52-3)			
Ethoxylated octyl phenol	mg/kg	< 10	ISO_DIS 18218-1: 2012
* Octilfenolo etossilato (OPEO cas 9002-93-1)			
Octyl phenol	mg/Kg	< 10	ISO_DIS 18218-1: 2012
* Octilfenolo (OP cas 27193-28-8)			

Laboratory director

Date 08/02/2018

Dr. Renzo Padovan EurChem

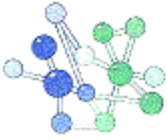
OPINIONS AND INTERPRETATIONS - not subject to accreditation ACCREDIA : Gli idrocarburi presenti sono composti esclusivamente da molecole alifatiche lineari e/o ramificate, appartenenti alla categoria delle paraffine.

- Laboratory acknowledge to analysis of foods (n. 11 Regional List of VENETO)

- Analytical dates above-stated refer only to the sample given to laboratory. - The partial reproduction of this Test report is forbidden.

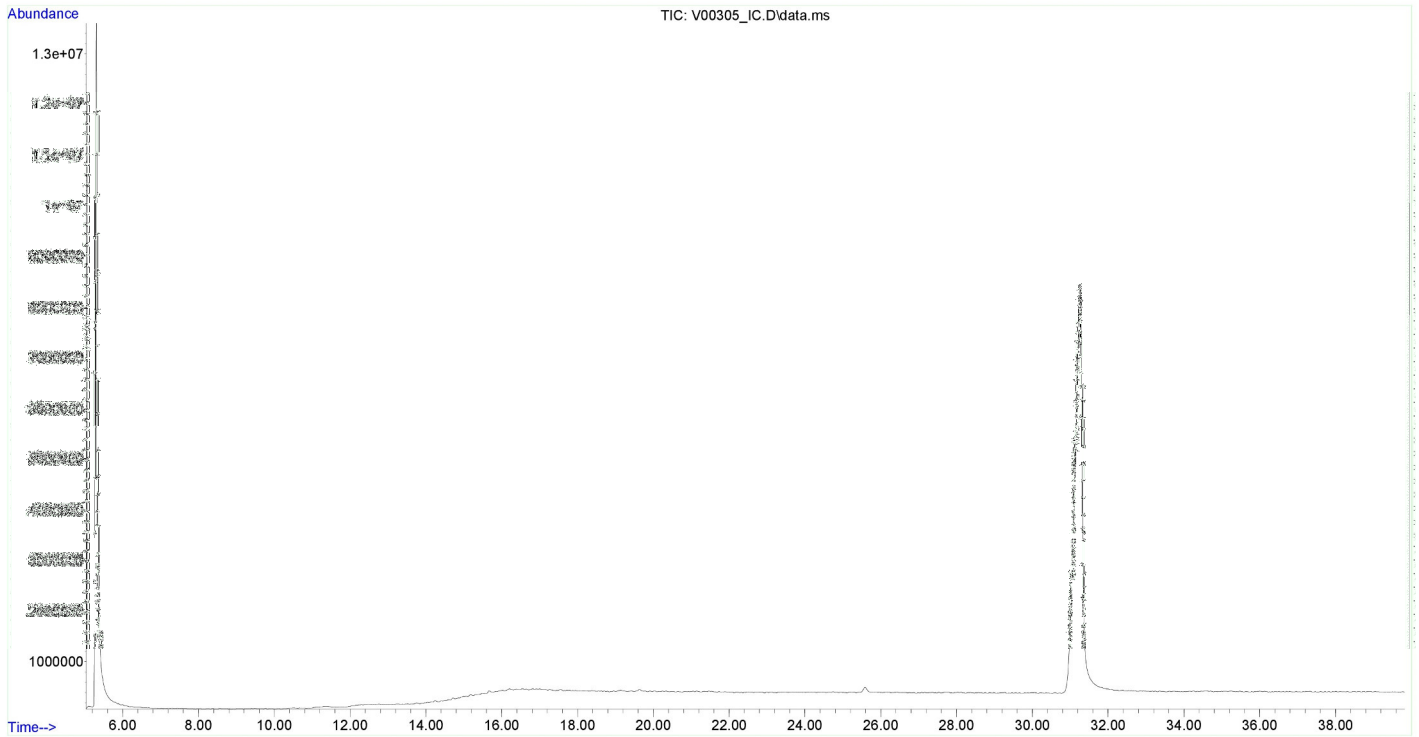
= analysis made by an external laboratory.

* = Try not subject to accreditation



Test Report N° V00305

LAB N° 0996
Sheet n° 11 di 11



- Laboratory acknowledge to analysis of foods (n. 11 Regional List of VENETO)
- Analytical dates above-stated refer only to the sample given to laboratory. - The partial reproduction of this Test report is forbidden.

= analysis made by an external laboratory.

* = Try not subject to accreditation