

36071 - ARZIGNANO (Vicenza) - Via Vespucci, 7
Tel. 0444/452144 - Fax 0444/452155
email: info@dedalab.com
url: http://www.dedalab.com

Codice fiscale e Partita IVA n.00894730241
Iscriz. R.E.A. n.204688
Cap. Soc. € 10.400,00 i.v.

Spett.le
ILSA Spa
Via Quinta Strada, 28 - Z.I. - C.P. 160
ARZIGNANO
36071 VI

Test Report N° V00303

Sheet n° 1 di 10

Sample Description

Ricevimento/Ordination date	15/01/2018
Descrizione del campione/Sample description	Rifiuti di cuoio wet-white (glutaraldeide) - campione R2
Codice/Code	CER 04 01 99
Data campionamento/Sampling date	15/01/2018
Campionato da/Sampling by	Customer
Data inizio analisi/Beginning analysis date	24/01/2018
Data fine analisi/Ending analysis date	06/02/2018

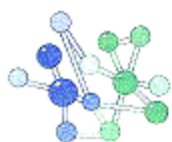
Parameter description	Um	Value	Method
* Aluminium (as Al) # Alluminio (come Al)	mg/Kg	16.1	APAT CNR IRSA 3020 Man 29: 2003
* Antimony (as Sb) # Antimonio (come Sb)	mg/Kg	< 0.1	APAT CNR IRSA 3020 Man 29: 2003
* Barium (as Ba) # Bario (come Ba)	mg/Kg	1.7	APAT CNR IRSA 3020 Man 29: 2003
* Arsenic (as As) # Arsenico (come As)	mg/Kg	< 0.1	APAT CNR IRSA 3020 Man 29: 2003
* Beryllium (as Be) # Berillio (come Be)	mg/Kg	< 0.1	APAT CNR IRSA 3020 Man 29: 2003
* Bismuth (as Bi) # Bismuto (come Bi)	mg/Kg	< 0.1	APAT CNR IRSA 3020 Man 29: 2003
* Boron (as B) # Boro (come B)	mg/Kg	< 0.1	APAT CNR IRSA 3020 Man 29: 2003
* #			

- Laboratory acknowledge to analysis of foods (n. 11 Regional List of VENETO)

- Analytical dates above-stated refer only to the sample given to laboratory. - The partial reproduction of this Test report is forbidden.

= analysis made by an external laboratory.

* = Try not subject to accreditation



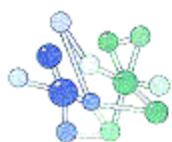
Test Report N° V00303			
Cadmium (as Cd)	mg/Kg	< 0.1	APAT CNR IRSA 3020 Man 29: 2003
* Cadmio (come Cd)			
#			
Cobalt (as Co)	mg/Kg	< 0.1	APAT CNR IRSA 3020 Man 29: 2003
* Cobalto (come Co)			
#			
Chromium (as Cr)	mg/Kg	4.7	APAT CNR IRSA 3020 Man 29: 2003
* Cromo totale (come Cr)			
#			
Iron (as Fe)	mg/Kg	118.2	APAT CNR IRSA 3020 Man 29: 2003
* Ferro (come Fe)			
#			
Manganese (as Mn)	mg/Kg	3.8	APAT CNR IRSA 3020 Man 29: 2003
* Manganese (come Mn)			
#			
Mercury (as Hg)	mg/Kg	< 0.1	APAT CNR IRSA 3020 Man 29: 2003
* Mercurio (come Hg)			
#			
Molybdenum (as Mo)	mg/Kg	< 0.1	APAT CNR IRSA 3020 Man 29: 2003
* Molibdeno (come Mo)			
#			
Nickel (as Ni)	mg/Kg	< 0.1	APAT CNR IRSA 3020 Man 29: 2003
* Nichel (come Ni)			
#			
Lead (as Pb)	mg/Kg	< 0.1	APAT CNR IRSA 3020 Man 29: 2003
* Piombo (come Pb)			
#			
Copper (as Cu)	mg/Kg	1.5	APAT CNR IRSA 3020 Man 29: 2003
* Rame (come Cu)			
#			
Selenium (as Se)	mg/Kg	< 0.1	APAT CNR IRSA 3020 Man 29: 2003
* Selenio (come Se)			
#			
Tin (as Sn)	mg/Kg	< 0.1	APAT CNR IRSA 3020 Man 29: 2003
* Stagno (come Sn)			
#			
Thallium (as Tl)	mg/Kg	< 0.1	APAT CNR IRSA 3020 Man 29: 2003
* Tallio (come Tl)			
#			
Tellurium (as Te)	mg/Kg	< 0.1	APAT CNR IRSA 3020 Man 29: 2003
* Tellurio (come Te)			
#			
Vanadium (as V)	mg/Kg	< 0.1	APAT CNR IRSA 3020 Man 29: 2003
* Vanadio (come V)			
#			
Zinc (as Zn)	mg/Kg	3.0	APAT CNR IRSA 3020 Man 29: 2003
* Zinco (come Zn)			
#			
Mineralization of the sample	-	-	APAT CNR IRSA 3010/A Man 29: 2003
* Mineralizzazione del campione			
#			
	mg/Kg	< 1	EPA 3550c 2007 + EPA 8270d: 2014
* Fenoli (speciazione)			
#			

- Laboratory acknowledge to analysis of foods (n. 11 Regional List of VENETO)

- Analytical dates above-stated refer only to the sample given to laboratory. - The partial reproduction of this Test report is forbidden.

= analysis made by an external laboratory.

* = Try not subject to accreditation



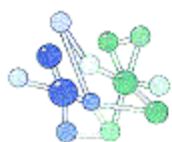
Substance	Unit	Result	Reference
Fenolo (cas 108-95-2)	mg/Kg	< 1	EPA 3550c 2007 + EPA 8270d: 2014
* 1,5-pentandiolo (cas 111-29-5)	mg/Kg	< 1	EPA 5021a 2003 + EPA 8260D
2-chlorophenol 2-clorofenolo (cas 95-57-8)	mg/kg	< 0.1	EPA 3550c 2007 + EPA 8270d: 2014
o-Cresol * 2-methylphenol (cas 95-48-7)	mg/Kg	< 1	EPA 3550c 2007 + EPA 8270d: 2014
m+p-Cresol * 3-methylphenol (cas 108-39-4) + 4-methylphenol (cas 106-44-5)	mg/Kg	< 1	EPA 3550c 2007 + EPA 8270d: 2014
2,6-dichlorophenol 2,6-diclorofenolo (cas 87-65-0)	mg/Kg	< 1	EPA 3550c 2007 + EPA 8270d: 2014
* 2,4-dimethylphenol (cas 105-67-9)	mg/Kg	< 1	EPA 3550c 2007 + EPA 8270d: 2014
2-nitrofenolo 2-nitrophenol (cas 88-75-5)	mg/Kg	< 1	EPA 3550c 2007 + EPA 8270d: 2014
2,4-dichlorophenol 2,4-diclorofenolo (cas 120-83-2)	mg/Kg	< 1	EPA 3550c 2007 + EPA 8270d: 2014
3-chlorophenol (cas 108-43-0)	mg/Kg	< 1	EPA 3550c 2007 + EPA 8270d: 2014
4-chlorophenol (cas 106-48-9)	mg/Kg	< 0.1	EPA 3550c 2007 + EPA 8270d: 2014
4-chloro-3-methylphenol (cas 59-50-7) 4-cloro-3-metilfenolo (cas 59-50-7)	mg/Kg	285	EPA 3550c 2007 + EPA 8270d: 2014
2,4,6-trichlorophenol 2,4,6-triclorofenolo (cas 88-06-2)	mg/Kg	< 1	EPA 3550c 2007 + EPA 8270d: 2014
2,4,5-trichlorophenol 2,4,5-triclorofenolo (cas 94-95-4)	mg/Kg	< 1	EPA 3550c 2007 + EPA 8270d: 2014
4-nitrophenol 4-nitrofenolo (cas 100-02-7)	mg/Kg	< 1	EPA 3550c 2007 + EPA 8270d: 2014
2,3,4,6-tetrachlorophenol 2,3,4,6-tetraclorofenolo (cas 58-90-2)	mg/Kg	< 1	EPA 3550c 2007 + EPA 8270d: 2014
Pentachlorophenol * Pentaclorofenolo (cas 87-86-5)	mg/Kg	< 1	EPA 3550c 2007 + EPA 8270d: 2014
* 2-methyl-4,6-dinitrophenol (cas 534-52-1)	mg/Kg	< 1	EPA 3550c 2007 + EPA 8270d: 2014

- Laboratory acknowledge to analysis of foods (n. 11 Regional List of VENETO)

- Analytical dates above-stated refer only to the sample given to laboratory. - The partial reproduction of this Test report is forbidden.

= analysis made by an external laboratory.

* = Try not subject to accreditation



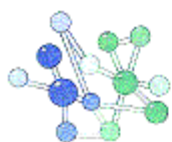
Test Report N° V00303			
6-secbutyl-2,4-dinitrophenol * Dinoseb (cas 88-85-7)	mg/Kg	< 1	EPA 3550c 2007 + EPA 8270d: 2014
Color * Colore	giudizio	Paglierino	
Appearance * Aspetto fisico	giudizio	Cuoio tritato	PdL: 2011
Odor * Odore	giudizio	Cuoio	PdL: 2011
* Stato fisico del campione	giudizio	Solido	PdL: 2011
* pH	unità	4.6	IRSACNR/64/PCF1: 1995
* Esame gascromatografico sostanze organiche estratte:	giudizio	Vedasi grafico allegato	EPA 3550c 2007 + EPA 8270d: 2014
* Solventi organici aromatici	mg/Kg	< 0.1	EPA 5021a 2003 + EPA 8260c: 2017
* 1,3-butadiene (cas 106-99-0)	mg/Kg	< 1	EPA 5021a 2003 + EPA 8260c: 2017
Benzene (cas 71-43-2)	mg/Kg	< 0.1	EPA 5021a 2003 + EPA 8260c: 2017
Ethylbenzene (cas 100-41-4)	mg/Kg	< 0.1	EPA 5021a 2003 + EPA 8260c: 2017
Toluene (cas 108-88-3)	mg/Kg	< 0.1	EPA 5021a 2003 + EPA 8260c: 2017
Xylene (come somma di isomeri)	mg/Kg	< 0.1	EPA 5021a 2003 + EPA 8260c: 2017
1,2-dimethylbenzene o-Xylene (cas 95-47-6)	mg/Kg	< 0.1	EPA 5021a 2003 + EPA 8260c: 2017
Styrene (cas n. 100-42-5)	mg/Kg	< 0.1	EPA 5021a 2003 + EPA 8260c: 2017
* Solventi organici clorurati	mg/Kg	< 0.1	EPA 8260d: 2017
1,2-Dichloropropane (cas 78-87-5)	mg/Kg	< 0.1	EPA 5021a 2003 + EPA 8260c: 2017
1,1,1-trichloroethane * 1,1,1-tricloroetano (cas 71-55-6)	mg/Kg	< 0.1	EPA 5021a 2003 + EPA 8260c: 2017

- Laboratory acknowledge to analysis of foods (n. 11 Regional List of VENETO)

- Analytical dates above-stated refer only to the sample given to laboratory. - The partial reproduction of this Test report is forbidden.

= analysis made by an external laboratory.

* = Try not subject to accreditation



LAB N° 0996

Sheet n° 5 di 10

Test Report N° V00303

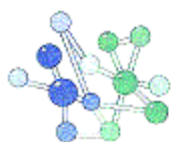
Trichloroethylene Tricloroetilene (cas 79-01-6)	mg/Kg	< 0.1	EPA 5021a 2003 + EPA 8260c: 2017
Tetrachloroethylene Tetrachloroethylene (127-18-4)	mg/Kg	< 0.1	EPA 5021a 2003 + EPA 8260c: 2017
Trichloromethane Cloroformio (cas 67-66-3)	mg/Kg	< 0.1	EPA 5021a 2003 + EPA 8260c: 2017
Polycyclic Aromatics Hydrocarbons * Idrocarburi policiclici aromatici	mg/Kg	< 1	EPA 3550c 2007 + EPA 8270d: 2014
1-methylpyrene (cas 2381-21-7)	mg/Kg	< 0.1	EPA 3550c 2007 + EPA 8270d: 2014
Acenaphthene (cas 83-32-9)	mg/Kg	< 0.1	EPA 3550c 2007 + EPA 8270d: 2014
Acenaphthylene (cas 208-96-8)	mg/Kg	< 0.1	EPA 3550c 2007 + EPA 8270d: 2014
Anthracene (cas 120-12-7)	mg/Kg	< 0.1	EPA 3550c 2007 + EPA 8270d: 2014
Benzo(a)anthracene (cas 56-55-3)	mg/Kg	< 0.1	EPA 3550c 2007 + EPA 8270d: 2014
* Benzo(b)fluoranthene (cas 205-99-2)	mg/Kg	< 0.1	EPA 3550c 2007 + EPA 8270d: 2014
* Benzo(k)fluorantene (cas 207-08-9)	mg/Kg	< 0.1	EPA 3550c 2007 + EPA 8270d: 2014
Benzo(g,h,i)perylene (cas 191-24-2)	mg/Kg	< 0.1	EPA 3550c 2007 + EPA 8270d: 2014
Benzo(j)fluoranthene (cas 205-82-3)	mg/Kg	< 0.1	EPA 3550c 2007 + EPA 8270d: 2014
Benzo(a)pyrene (cas 50-32-8)	mg/Kg	< 0.1	EPA 3550c 2007 + EPA 8270d: 2014
Benzo(e)pyrene (cas 192-97-2)	mg/Kg	< 0.1	EPA 3550c 2007 + EPA 8270d: 2014
Chrysene (cas 218-01-9)	mg/Kg	< 0.1	EPA 3550c 2007 + EPA 8270d: 2014
Cyclopenta(c,d)pyrene (cas 27208-37-3)	mg/Kg	< 0.1	EPA 3550c 2007 + EPA 8270d: 2014
* Dibenzo(a,e)pyrene (cas 192-65-4)	mg/Kg	< 0.1	EPA 3550c 2007 + EPA 8270d: 2014

- Laboratory acknowledge to analysis of foods (n. 11 Regional List of VENETO)

- Analytical dates above-stated refer only to the sample given to laboratory. - The partial reproduction of this Test report is forbidden.

= analysis made by an external laboratory.

* = Try not subject to accreditation



Test Report N° V00303

LAB N° 0996

Sheet n° 6 di 10

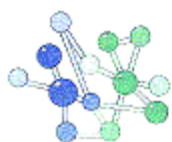
Dibenzo(a,h)anthracene (cas 53-70-3)	mg/Kg	< 0.1	EPA 3550c 2007 + EPA 8270d: 2014
* Dibenzo(a,h)pyrene (cas 189-64-0)	mg/Kg	< 0.1	EPA 3550c 2007 + EPA 8270d: 2014
* Dibenzo(a,i)pyrene (cas 189-55-9)	mg/Kg	< 0.1	EPA 3550c 2007 + EPA 8270d: 2014
* Dibenzo(a,l)pyrene (cas 191-30-0)	mg/Kg	< 0.1	EPA 3550c 2007 + EPA 8270d: 2014
Fluorantene (cas 206-44-0)	mg/Kg	< 0.1	EPA 3550c 2007 + EPA 8270d: 2014
Fluorene (cas 86-73-7)	mg/Kg	< 0.1	EPA 3550c 2007 + EPA 8270d: 2014
Indeno(1,2,3-cd)pyrene (cas 193-39-5)	mg/Kg	< 0.1	EPA 3550c 2007 + EPA 8270d: 2014
Naphthalene (cas 91-20-3)	mg/Kg	< 0.1	EPA 3550c 2007 + EPA 8270d: 2014
* Perylene (cas 198-55-0)	mg/Kg	< 0.1	EPA 3550c 2007 + EPA 8270d: 2014
Phenanthrene (cas 85-01-8)	mg/Kg	< 0.1	EPA 3550c 2007 + EPA 8270d: 2014
Pyrene (cas 129-00-0)	mg/Kg	< 0.1	EPA 3550c 2007 + EPA 8270d: 2014
* Policlorobifenili e policlorotrifenili (come somma)	mg/Kg	< 0.01	EPA 3550c 2007 + EPA 8270d: 2014
* 2,3-Dichlorobiphenyl (16605-91-7) #5	mg/Kg	< 0.01	EPA 3550c 2007 + EPA 8270d: 2014
* 2,2',5-Trichlorobiphenyl (cas 37680-65-2) #18	mg/Kg	< 0.01	EPA 3550c 2007 + EPA 8270d: 2014
2,4,4' - Trichlorobiphenyl (cas n. 7012-37-5) # 28	mg/Kg	< 0.01	EPA 3550c 2007 + EPA 8270d: 2014
* 2,4',5-Trichlorobiphenyl (cas 16606-02-3) #31	mg/Kg	< 0.01	EPA 3550c 2007 + EPA 8270d: 2014
* 2,2',3,5'-Tetrachlorobiphenyl (cas 41464-39-5) #44	mg/Kg	< 0.01	EPA 3550c 2007 + EPA 8270d: 2014
2,2',5,5'-Tetrachlorobiphenyl (cas 35693-99-3) #52	mg/Kg	< 0.01	EPA 3550c 2007 + EPA 8270d: 2014

- Laboratory acknowledge to analysis of foods (n. 11 Regional List of VENETO)

- Analytical dates above-stated refer only to the sample given to laboratory. - The partial reproduction of this Test report is forbidden.

= analysis made by an external laboratory.

* = Try not subject to accreditation



Test Report N° V00303

LAB N° 0996

Sheet n° 7 di 10

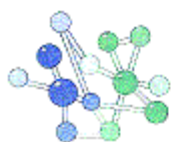
* 2,3',4,4'-Tetrachlorobiphenyl (cas 32598-10-0) #66	mg/Kg	< 0.01	EPA 3550c 2007 + EPA 8270d: 2014
3,3',4,4'-Tetrachlorobiphenyl (cas 32598-13-3) #77	mg/Kg	< 0.01	EPA 3550c 2007 + EPA 8270d: 2014
3,4,4',5-Tetrachlorobiphenyl (cas 70362-50-4) #81	mg/Kg	< 0.01	EPA 3550c 2007 + EPA 8270d: 2014
* 2,2',3,4,5'-Pentachlorobiphenyl (cas 38380-02-8) #87	mg/Kg	< 0.01	EPA 3550c 2007 + EPA 8270d: 2014
2,2',3,5',6-pentachlorobiphenyl (cas 38379-99-6) #95	mg/Kg	< 0.01	EPA 3550c 2007 + EPA 8270d: 2014
2,2',4,4',5-Pentachlorobiphenyl (cas 38380-01-1) #99	mg/Kg	< 0.01	EPA 3550c 2007 + EPA 8270d: 2014
2,2',4,5,5'-Pentachlorobiphenyl (cas 37680-73-2) #101	mg/Kg	< 0.01	EPA 3550c 2007 + EPA 8270d: 2014
2,3,3',4,4'-Pentachlorobiphenyl (cas 32598-14-4) #105	mg/Kg	< 0.01	EPA 3550c 2007 + EPA 8270d: 2014
2,3,3',4',6-Pentachlorobiphenyl (cas 38380-03-9) #110	mg/Kg	< 0.01	EPA 3550c 2007 + EPA 8270d: 2014
2,3,4,4',5-Pentachlorobiphenyl (cas 74472-37-0) #114	mg/Kg	< 0.01	EPA 3550c 2007 + EPA 8270d: 2014
2,3',4,4',5-Pentachlorobiphenyl (cas 31508-00-6) #118	mg/Kg	< 0.01	EPA 3550c 2007 + EPA 8270d: 2014
2',3,4,4',5-Pentachlorobiphenyl (cas 65510-44-3) #123	mg/Kg	< 0.01	EPA 3550c 2007 + EPA 8270d: 2014
3,3',4,4',5-Pentachlorobiphenyl (cas 57465-28-8) #126	mg/Kg	< 0.01	EPA 3550c 2007 + EPA 8270d: 2014
2,2',3,3',4,4'-Hexachlorobiphenyl (cas 38380-07-3) #128	mg/Kg	< 0.01	EPA 3550c 2007 + EPA 8270d: 2014

- Laboratory acknowledge to analysis of foods (n. 11 Regional List of VENETO)

- Analytical dates above-stated refer only to the sample given to laboratory. - The partial reproduction of this Test report is forbidden.

= analysis made by an external laboratory.

* = Try not subject to accreditation



Test Report N° V00303

LAB N° 0996

Sheet n° 8 di 10

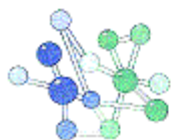
2,2',3,4,4',5'-Hexachlorobiphenyl (cas 35065-28-2) #138	mg/Kg	< 0.01	EPA 3550c 2007 + EPA 8270d: 2014
* 2,2',3,4,5,5'-Hexachlorobiphenyl (cas 52712-04-6) #141	mg/Kg	< 0.01	EPA 3550c 2007 + EPA 8270d: 2014
2,2',3,4',5,5'-Hexachlorobiphenyl (cas 51908-16-8) #146	mg/Kg	< 0.01	EPA 3550c 2007 + EPA 8270d: 2014
2,2',3,4',5,6-Hexachlorobiphenyl (cas 38380-04-0) #149	mg/Kg	< 0.01	EPA 3550c 2007 + EPA 8270d: 2014
2,2',3,5,5',6-Hexachlorobiphenyl (cas 52663-63-5) #151	mg/Kg	< 0.01	EPA 3550c 2007 + EPA 8270d: 2014
2,2',4,4',5,5'-Hexachlorobiphenyl (cas 35065-27-1) #153	mg/Kg	< 0.01	EPA 3550c 2007 + EPA 8270d: 2014
2,3,3',4,4',5-Hexachlorobiphenyl (cas 38380-08-4) #156	mg/Kg	< 0.01	EPA 3550c 2007 + EPA 8270d: 2014
2,3,3',4,4',5'-Hexachlorobiphenyl (cas 69782-90-7) #157	mg/Kg	< 0.01	EPA 3550c 2007 + EPA 8270d: 2014
* 2,3,3',4,5,5'-Hexachlorobiphenyl (cas 39635-35-3) #159	mg/Kg	< 0.01	EPA 3550c 2007 + EPA 8270d: 2014
2,3',4,4',5,5'-Hexachlorobiphenyl (cas 52663-72-6) #167	mg/Kg	< 0.01	EPA 3550c 2007 + EPA 8270d: 2014
3,3',4,4',5,5'-Hexachlorobiphenyl (cas 32774-16-6) #169	mg/Kg	< 0.01	EPA 3550c 2007 + EPA 8270d: 2014
2,2',3,3',4,4',5-Heptachlorobiphenyl (cas 35065-30-6) #170	mg/Kg	< 0.01	EPA 3550c 2007 + EPA 8270d: 2014
2,2',3,3',4',5,6-Heptachlorobiphenyl (cas 52663-70-4) #177	mg/Kg	< 0.01	EPA 3550c 2007 + EPA 8270d: 2014

- Laboratory acknowledge to analysis of foods (n. 11 Regional List of VENETO)

- Analytical dates above-stated refer only to the sample given to laboratory. - The partial reproduction of this Test report is forbidden.

= analysis made by an external laboratory.

* = Try not subject to accreditation



Test Report N° V00303

LAB N° 0996

Sheet n° 9 di 10

2,2',3,4,4',5,5'-Heptachlorobiphenyl (cas 35065-29-3) #180	mg/Kg	< 0.01	EPA 3550c 2007 + EPA 8270d: 2014
2,2',3,4,4',5',6-Heptachlorobiphenyl (cas 52663-69-1) #183	mg/Kg	< 0.01	EPA 3550c 2007 + EPA 8270d: 2014
2,2',3,4',5,5',6-Heptachlorobiphenyl (cas 52663-68-0) #187	mg/Kg	< 0.01	EPA 3550c 2007 + EPA 8270d: 2014
2,3,3',4,4',5,5'-Heptachlorobiphenyl (cas 39635-31-9) #189	mg/Kg	< 0.01	EPA 3550c 2007 + EPA 8270d: 2014
* 2,2',3,3',4,4',5,5',6-Nonachlorobiphenyl (cas 40186-72-9) #206	mg/Kg	< 0.01	EPA 3550c 2007 + EPA 8270d: 2014
Hydrocarbons and mineral oils * Idrocarburi e olii minerali	mg/Kg	< 1	UNI EN 14039: 2005
* Idrocarburi leggeri (C < 12)	mg/Kg	< 1	EPA Met 8015d: 2003
* Idrocarburi pesanti (C > 12)	mg/Kg	< 1	UNI EN 14039: 2005
Hexavalent chromium * Cromo esavalente (come Cr)	mg/Kg	< 2	EPA 3060 A 1996 + EPA 7196A: 1992
Substances soluble in hexane * Sostanze solubili in esano	%	0.2	EUP 3.1
Determination of formaldehyde content * Formaldeide libera e combinata	mg/Kg	19.9	PdL: 2011
Acetaldehyde (cas 75-07-0) * Acetaldeide (cas 75-07-0)	mg/Kg	2.1	PdL: 2011
Glutaraldehyde (cas 111-30-8) * Glutaraldeide (cas 111-30-8)	mg/Kg	18.9	PdL: 2011
* 4-hydroxy-3-(3-oxopropyl)cyclohexene-1-carbaldehyde	mg/Kg	< 1	UNI EN ISO 17226-1: 2008

Date 07/02/2018

Laboratory director

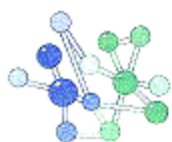
Dr. Renzo Padovan EurChem

- Laboratory acknowledge to analysis of foods (n. 11 Regional List of VENETO)

- Analytical dates above-stated refer only to the sample given to laboratory. - The partial reproduction of this Test report is forbidden.

= analysis made by an external laboratory.

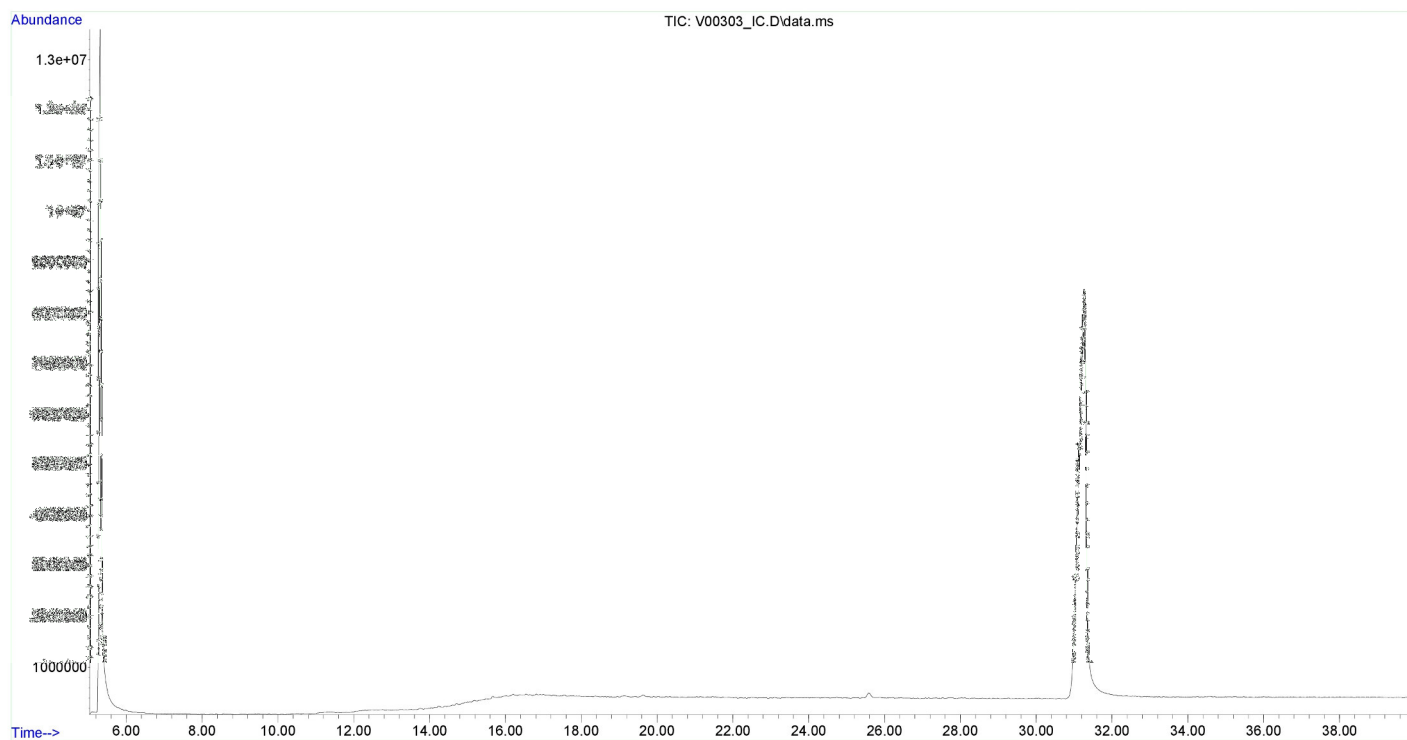
* = Try not subject to accreditation



Test Report N° V00303

LAB N° 0996

Sheet n° 10 di 10



- Laboratory acknowledge to analysis of foods (n. 11 Regional List of VENETO)

- Analytical dates above-stated refer only to the sample given to laboratory. - The partial reproduction of this Test report is forbidden.

= analysis made by an external laboratory.

* = Try not subject to accreditation